

The background of the cover is a photograph of a modern interior. In the foreground, two men, Drew and Jonathan Scott, stand in front of a long wooden dining table with a white marble top. The man on the left is wearing a dark navy suit, a light pink shirt, and a striped tie. The man on the right is wearing a grey vest over a blue and white checkered shirt, a striped tie, and dark jeans. On the table behind them is a large, round, metallic vase and some greenery. The background shows a dark wall with framed art and a window with sheer curtains.

**SCOTT**  
LIVING

# 2017-2018 SCOTT LIVING FURNITURE CATALOG

*Drew &  
Jonathan  
Scott*

SCOTT  
LIVING

2017-2018  
SCOTT LIVING  
FURNITURE CATALOG





## EXPLORE THE COLLECTIONS

### BEDROOM

Master Bedroom Collections .....	10
Upholstered Beds .....	18

### LIVING ROOM

Stationary Sectionals.....	22
Stationary Sofa Collections .....	32
Sofa Beds .....	40
Occasional Groups.....	44
Entertainment Units.....	48

### DINING ROOM

Dining .....	54
Dining Chairs .....	94

### HOME OFFICE

Small Collections .....	97
Desks & Bookcases .....	98
Office Chairs .....	99

### ACCENTS

Benches.....	101
Accent Tables.....	102
Accent Chairs .....	103
Tall Cabinets & Console Tables .....	105
Accent Cabinets.....	107
Rugs.....	111

2017-2018 SCOTT LIVING  
CATALOG INDEX

ITEM	PG	ITEM	PG	ITEM	PG	ITEM	PG	ITEM	PG
100527	54	107732	69	204471Q	11	360022	41	705658	33
100703	80	107733	69	204472	11	360025	42	705658	45
100738	64	107735	69	204472	12	500574	101	705659	33
102819	55	107737	69	204472KE	12	501000	25	705659	45
102819	77	107751	72	204472KW	12	501139	23	705667	27
102819	79	107752	72	204472Q	12	501170	27	705667	46
102819	94	107760	73	204473	11	501548	101	705668	27
102820	55	107761	75	204473	12	506171	39	705668	46
102820	77	107762	73	204474	11	506172	39	705669	27
102820	79	107762	75	204474	12	506173	39	705669	46
102820	94	107763	75	204475	11	506174	39	705677	23
102965	87	107764	73	204475	12	506191	33	705677	47
102965	95	107764	75	204476	11	506192	33	705678	23
102966	87	107764B	73	204476	12	506193	33	705678	47
102966	95	107764B	75	204477	11	506211	32	705679	23
102967	64	107771	77	204477	12	506212	32	705679	47
102986	92	107773	77	204478	11	506213	32	705687	35
102987	92	107775	77	204478	12	506521	35	705687	44
102988	92	107775	79	204479	11	506522	35	705688	35
103066	61	107775	80	204479	12	506523	35	705688	44
103066	65	107775	81	204551KE	10	506531	37	705787	32
103066	94	107781	79	204551KW	10	506532	37	705787	47
103075	91	107783	79	204551Q	10	506533	37	705788	32
103076	91	107791	80	204552	10	550117	101	705788	47
103077	91	107793	80	204553	10	551221	31	705817	37
103128	57	107801	81	204554	10	551222	31	705817	25
103128	81	107803	81	204555	10	551223	31	705817	46
103128	94	107851	82	204557	10	551311	29	705818	37
103129	57	107852	59	204611KE	13	551312	29	705818	25
103129	94	107852	82	204611KW	13	551313	29	705818	46
103130	55	107852	83	204611Q	13	551314LAF	29	705819	37
103130	57	107852	95	204612	13	551314RAF	29	705819	25
103130	81	107855	82	204613	13	700866	47	705819	46
103130	94	107861	83	204614	13	700890	48	705847	45
103547	59	107865	83	204615	13	701036	49	705848	45
103547	95	107921	84	204616	13	701039	51	705849	45
103803	54	107922	84	205241KE	17	701045	51	721247	31
103803	60	107941	54	205241KW	17	701055	48	721247	44
103803	63	107951	89	205241Q	17	701060	50	721248	31
103803	94	107952	85	205242	17	701062	50	721248	44
104968	90	107952	89	205243	17	705497	45	801289	97
107481	55	107952	95	205244	17	705498	45	801289	99
107483	55	107953	85	205245	17	705499	45	801327	99
107501	57	107953	89	205246	17	705527	45	801328	99
107503	57	107953	95	205248	17	705528	45	801439	98
107511	59	107954	85	300705F	19	705536	47	801440	98
107513	59	107954	89	300705KE	19	705537	47	801528	99
107515	59	107954	95	300705KW	19	705538	47	801538	99
107540	60	107981	71	300705Q	19	705547	29	801539	99
107550	61	107982	71	300705T	19	705547	44	801751	98
107561	63	107983	71	300706F	19	705548	29	801754	98
107565	63	107985	71	300706KE	19	705548	44	801771	97
107571	85	107987	71	300706KW	19	705549	29	801773	97
107590	87	182004	91	300706Q	19	705549	44	802289	99
107650	65	182005	91	300706T	19	705637	39	903351	102
107721	66	182019	90	300714F	18	705637	44	903352	102
107722	66	182031	91	300714KE	18	705638	39	903369	103
107723	66	182032	91	300714KW	18	705638	44	903370	103
107724	66	182035	90	300714Q	18	705639	39	903377	104
107725	66	182036	90	300714T	18	705639	44	903378	104
107726	66	204471KE	11	360010	43	705657	33	903379	104
107731	69	204471KW	11	360013	40	705657	45	903402	31
								903402	104
								903820	103
								904045	104
								904046	104
								904052	103
								904068	103
								910140	27
								910140	101
								930015	102
								930017	102
								950711	106
								950713	106
								950732	105
								950733	107
								950742	109
								950745	109
								950758	108
								950759	107
								950760	107
								950764	108
								950771	109
								950776	108
								950777	109
								950927	105
								970210	111
								970210L	111
								970211	111
								970211L	111
								970212	111
								970212L	111
								970213	111
								970213L	111
								970216	111
								970216L	111
								970217	111
								970217L	111
								970218	111
								970218L	111
								970219	112
								970219L	112
								970220	112
								970220L	112
								970221	112
								970221L	112
								970222	112
								970222L	112
								970223	112
								970223L	112
								970224	112
								970224L	112
								970225	111
								970225L	111





# SCOTT LIVING



We are extremely ecstatic to finally bring this vision to life and premier the first Scott Living furniture collection. We're so passionate about helping homeowners express their personal styles and we truly believe that our vast array of products all under one roof will give you the tools to curate the perfect looks, as if we were right there with you. In this exclusive design collaboration, you will find furniture collections and pieces for every room in your home.

*- Drew & Jonathan Scott*





SCOTT  
LIVING





## MADE IN INDIA

Unique furniture made by hand which has been crafted by accomplished Indian artisans. Due to handcrafting, each style can have slight variations, making each piece produced truly unique!



-----  
The Thompson Collection is  
specially made with unique,  
stand-out pieces that are  
handcrafted to perfection!  
-----



SCOTT  
LIVING





# EXPLORE THE BEDROOM COLLECTIONS





# TAKE A LOOK AT WHAT'S AHEAD!

## BEDROOM

Master Bedroom Collections .....	10
Upholstered Beds .....	18



- Transitional clean line design for urban dwellers
- Clean graphite finish has rich and handsome presentation
- Finished drawer boxed with black felt lined top drawers

- Full length floor mirror (perfect for selfies!)
- Finger tip pull drawers
- Coaster's exclusive for Scott Living

## CASE PIECE COMPOSITION

FINISH: GRAPHITE

DRAWER GLIDES: METAL EXTENSION GLIDES

DRAWER: ENGLISH DOVETAIL FRONT &amp; BACK

BOX SPRING: REQUIRED

**A. 204551Q Queen Bed**

63.00"w x 83.75"d x 50.25"h (4 slats)

**204551KE Eastern King Bed**

79.00"w x 83.75"d x 50.25"h (4 slats)

**204551KW California King Bed**

79.00"w x 87.75"d x 50.25"h (4 slats)

**B. 204552 Nightstand**

22.00"w x 17.25"d x 24.00"h

**C. 204553 Dresser**

60.00"w x 18.00"d x 36.75"h

**D. 204554 Mirror**

40.00"w x 1.75"d x 40.00"h

**E. 204555 Chest**

34.00"w x 18.00"d x 51.75"h

**F. 204557 Floor Mirror**

32.00"w x 1.75"d x 88.25"h

## PRODUCT HIGHLIGHTS



**FELT LINED TOP DRAWERS:**  
Safely store jewelry or treasured keepsakes



**USB OUTLET:** Nightstand comes with dual USB ports



**PRODUCT MATERIALS:**  
Hardwood - Solid poplar Veneer - Birch



**MAX BED WEIGHT:**  
600 lbs



**50 POUND TIP OVER TEST:**  
Cases 30" and taller passed ASTM standards test



- Transitional style with inspiration from vintage British military campaign furniture updated with our platform bed
- Offered with two sizes of cases
- Beds are offered with or without storage at the footboard
- Black felt lined top drawers with finished drawer boxes

- Nightstands have dual USB ports
- Regular size dresser and taller mule dresser for extra storage
- Dressers have removable jewelry tray inside top right drawer
- Door chest has shoe shelf at bottom
- Coaster's exclusive for Scott Living



### CASE PIECE COMPOSITION

FINISH: DARK COCOA

DRAWER GLIDES: METAL EXTENSION GLIDES

DRAWER: ENGLISH DOVETAIL FRONT & BACK

BOX SPRING: NOT REQUIRED



### A. 204471Q Queen Bed

71.00"w x 87.50"d x 56.50"h (13 slats)

### 204471KE Eastern King Bed

87.00"w x 87.50"d x 56.50"h (13 slats)

### 204471KW California King Bed

87.00"w x 91.50"d x 56.50"h (13 slats)

### B. 204472 Nightstand, 2 Drawers

24.00"w x 18.00"d x 27.25"h

### C. 204473 Dresser, 6 Drawers

56.00"w x 19.00"d x 34.00"h

### D. 204474 Mirror (for 6 drawer dresser)

40.00"w x 1.50"d x 42.00"h

### E. 204475 Chest, 5 Drawers

42.25"w x 19.00"d x 56.75"h

### F. 204476 Nightstand, 3 Drawers

29.25"w x 18.00"d x 29.25"h

### G. 204477 Dresser, 10 Drawers

65.50"w x 19.00"d x 43.25"h

### H. 204478 Mirror (for 10 drawer dresser)

49.00"w x 1.50"d x 32.00"h

### I. 204479 Gentleman's Chest

45.00"w x 20.00"d x 64.75"h

### PRODUCT HIGHLIGHTS



**FELT LINED TOP DRAWERS:**  
Safely store jewelry or treasured keepsakes



**USB OUTLET:** Nightstand comes with dual USB ports



**PRODUCT MATERIALS:** Asian hardwood, mindy veneer



**STORAGE SPACE:** Store away personal items



**MIX & MATCH:** Combine pieces to match your personal style



**MAX BED WEIGHT:**  
600 lbs



**50 POUND TIP OVER TEST:**  
Cases 30" and taller passed ASTM standards test

Also offered as a storage bed.  
See next page for details.



- Transitional style with inspiration from vintage British military campaign furniture updated with our platform bed
- Offered with two sizes of cases

- Beds are offered with or without storage at the footboard
- Black felt lined top drawers with finished drawer boxes
- Nightstands have dual USB ports

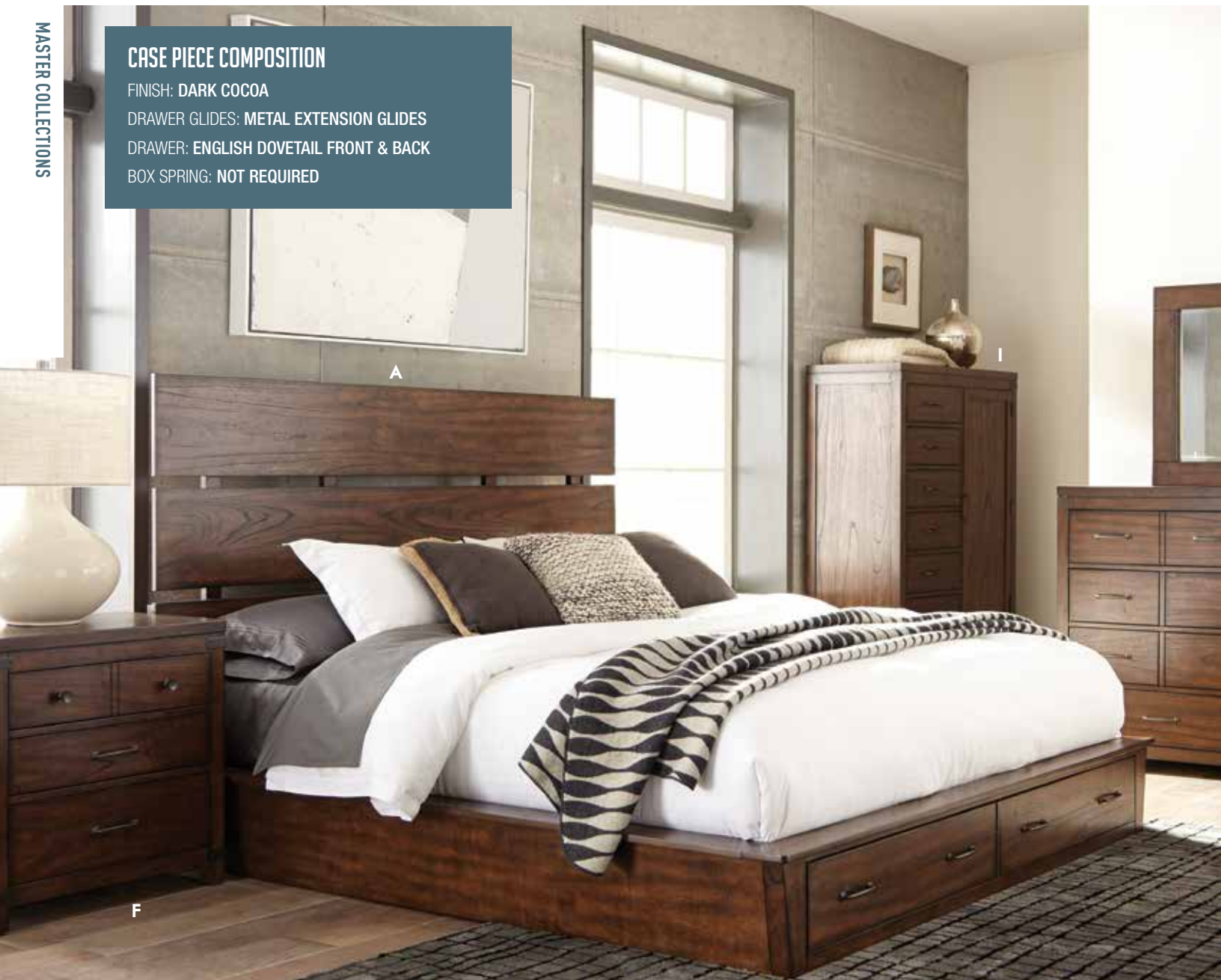
## CASE PIECE COMPOSITION

FINISH: DARK COCOA

DRAWER GLIDES: METAL EXTENSION GLIDES

DRAWER: ENGLISH DOVETAIL FRONT &amp; BACK

BOX SPRING: NOT REQUIRED

**A. 204470Q Queen Storage Bed**

71.00"w x 87.50"d x 56.50"h (13 slats)

**204470KE Eastern King Storage Bed**

87.00"w x 87.50"d x 56.50"h (13 slats)

**204470KW California King Storage Bed**

87.00"w x 91.50"d x 56.50"h (13 slats)

**B. 204472 Nightstand, 2 Drawers**

24.00"w x 18.00"d x 27.25"h

**C. 204473 Dresser, 6 Drawers**

56.00"w x 19.00"d x 34.00"h

**D. 204474 Mirror (for 6 drawer dresser)**

40.00"w x 1.50"d x 42.00"h

**E. 204475 Chest, 5 Drawers**

42.25"w x 19.00"d x 56.75"h

**F. 204476 Nightstand, 3 Drawers**

29.25"w x 18.00"d x 29.25"h

**G. 204477 Dresser, 10 Drawers**

65.50"w x 19.00"d x 43.25"h

**H. 204478 Mirror (for 10 drawer dresser)**

49.00"w x 1.50"d x 32.00"h

**I. 204479 Gentleman's Chest**

45.00"w x 20.00"d x 64.75"h

## PRODUCT HIGHLIGHTS

**FELT LINED TOP DRAWERS:** Safely store jewelry or treasured keepsakes**USB OUTLET:** Nightstand comes with dual USB ports**PRODUCT MATERIALS:** Asian hardwood, mindy veneer**STORAGE SPACE:** Store away personal items**MIX & MATCH:** Combine pieces to match your personal style**MAX BED WEIGHT:** 600 lbs**50 POUND TIP OVER TEST:** Cases 30" and taller passed ASTM standards test

- Regular size dresser and taller mule dresser for extra storage
- Tall dresser has removable jewelry tray inside top right drawer
- Door chest has shoe shelf at bottom
- Coaster's exclusive for Scott Living

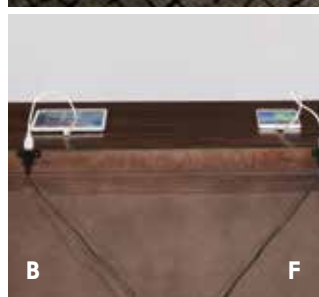
## EXPERIENCED CRAFTSMANSHIP

Each piece is carefully designed to help you create your perfect bedroom.



BEDROOM

MASTER COLLECTIONS



AUBURN  
COLLECTION

- Extra long metal handles on bedroom are custom designed and hand forged in a dark antique brass finish
- Nightstand has dual USB ports

- Finished drawer boxes with black felt lined top drawers
- Dresser has removable jewelry tray
- Coaster's exclusive for Scott Living

MASTER COLLECTIONS



## CASE PIECE COMPOSITION

FINISH: WHITE WASHED NATURAL

DRAWER GLIDES: METAL EXTENSION GLIDES

DRAWER: ENGLISH DOVETAIL FRONT & BACK

BOX SPRING: REQUIRED

## CRAFTED BY INDIAN ARTISANS

Each piece produced has truly unique variations creating a perfect piece.



SCOTT  
LIVING

BEDROOM

MASTER COLLECTIONS



### A. 204611Q Queen Bed

64.00"w x 86.50"d x 60.00"h (4 slats)

### 204611KE Eastern King Bed

80.00"w x 86.50"d x 60.00"h (4 slats)

### 204611KW California King Bed

80.00"w x 90.50"d x 60.00"h (4 slats)

### B. 204612 Nightstand

29.25"w x 18.00"d x 29.25"h

### C. 204613 Dresser

65.00"w x 18.00"d x 39.25"h

### D. 204614 Mirror

46.00"w x 1.50"d x 36.00"h

### E. 204615 Chest

40.00"w x 18.00"d x 54.50"h

### F. 204616 Bench

48.00"w x 16.00"d x 18.25"h

## PRODUCT HIGHLIGHTS

 **FELT LINED TOP DRAWERS:** Safely store jewelry or treasured keepsakes

 **HARDWARE FINISH:** Antique brass finish handles

 **USB OUTLET:** Nightstand comes with dual USB ports

 **PRODUCT MATERIALS:** Hardwood - Solid mahogany Veneer - Knotty oak, acacia & okume

 **MAX BED WEIGHT:** 600 lbs

 **50 POUND TIP OVER TEST:** Cases 30" and taller passed ASTM standards test



ELLISON  
COLLECTION

- Absolute harmony of rustic, modern, and industrial styles
- A true modern platform bed with extended platform on side rails
- Wire brushed wood surface with wild wood grain in a rich warm bourbon brown finish

- Full length floor mirror has metal hanging hooks and is perfect for selfies!
- Nightstand has dual USB ports
- Finished drawer boxes with black felt lined top drawers

MASTER COLLECTIONS



- Removable jewelry tray in top right dresser drawer
- Powder coated metal finish
- Coaster's exclusive for Scott Living

## EXPERIENCED CRAFTSMANSHIP

Each piece is carefully designed to help you create your perfect bedroom.



BEDROOM

MASTER COLLECTIONS

### CASE PIECE COMPOSITION

FINISH: **BOURBON BROWN**

DRAWER GLIDES: **METAL EXTENSION GLIDES**

DRAWER: **ENGLISH DOVETAIL FRONT & BACK**

BOX SPRING: **NOT REQUIRED**



D

#### A. 205241Q Queen Bed

70.25"w x 87.25"d x 54.00"h (13 slats)

#### 205241KE Eastern King Bed

86.25"w x 87.25"d x 54.00"h (13 slats)

#### 205241KW California King Bed

86.25"w x 91.25"d x 54.00"h (13 slats)

#### B. 205242 Nightstand

28.00"w x 17.00"d x 24.50"h

#### C. 205243 Dresser

68.00"w x 18.75"d x 40.50"h

#### D. 205244 Mirror

50.00"w x 2.00"d x 40.00"h

#### E. 205245 Chest

40.00"w x 19.00"d x 54.50"h

#### F. 205246 Bench

60.00"w x 17.00"d x 18.25"h

#### G. 205248 Floor Mirror

36.25"w x 2.00"d x 80.00"h

### PRODUCT HIGHLIGHTS



**FELT LINED TOP DRAWERS:**  
Safely store jewelry or treasured keepsakes



**USB OUTLET:** Nightstand comes with dual USB ports



**PRODUCT MATERIALS:**  
Hardwood - Acacia  
Veneer - Acacia



**NAILHEAD TRIM ACCENTS:**  
Individually hand placed nailhead trim



**MAX BED WEIGHT:**  
600 lbs



**50 POUND TIP OVER TEST:**  
Cases 30" and taller passed ASTM standards test

B



G



A



## SARATOGA UPHOLSTERED BED

- Bed upholstered in oatmeal woven fabric
- Frame constructed with pine and plywood
- Button tufted headboard and footboard

- Individually applied bronze nailhead trim
- Solid birch legs finished in black
- Box spring required



UPHOLSTERED BEDS



### A. 300714Q Queen Bed

65.00" w x 89.00" d x 55.00" / 35.00" h (4 slats)

### 300714KE Eastern King Bed

81.50" w x 89.00" d x 55.00" / 35.00" h (5 slats)

### 300714KW California King Bed

77.50" w x 93.00" d x 55.00" / 35.00" h (5 slats)

### 300714F Full Bed

59.50" w x 83.00" d x 55.00" / 35.00" h (4 slats)

### 300714T Twin Bed

44.50" w x 83.00" d x 55.00" / 35.00" h (4 slats)

## UPHOLSTERED BED COMPOSITION

UPHOLSTERY: OATMEAL WOVEN FABRIC

NAILHEAD: BRONZE

LEG FINISH: BLACK

BOX SPRING: REQUIRED

STATIC TESTED WT: 1,000 LBS

## BENICIA UPHOLSTERED BED

- Demi-wing bed upholstered in woven fabric
- Frame constructed with pine and plywood
- Button tufted headboard
- Individually applied bronze nailhead trim
- Solid birch legs finished in black
- Also available as headboard only
- Available in grey and beige woven fabric
- Box spring required

SCOTT  
LIVING  
BEDROOM

UPHOLSTERED BEDS

### UPHOLSTERED BED COMPOSITION

UPHOLSTERY: GREY WOVEN FABRIC  
NAILHEAD: BRONZE  
LEG FINISH: BLACK  
BOX SPRING: REQUIRED  
STATIC TESTED WT: 1,000 LBS



A



B

### UPHOLSTERED BED COMPOSITION

UPHOLSTERY: BEIGE WOVEN FABRIC  
NAILHEAD: BRONZE  
LEG FINISH: BLACK  
BOX SPRING: REQUIRED  
STATIC TESTED WT: 1,000 LBS

#### A. 300705Q Queen Bed

69.75"w x 85.75"d x 60.00"h (4 slats)

#### 300705KE Eastern King Bed

85.75"w x 85.75"d x 60.00"h (5 slats)

#### 300705KW California King Bed

81.75"w x 89.75"d x 60.00"h (5 slats)

#### 300705F Full Bed

63.75"w x 79.75"d x 60.00"h (4 slats)

#### 300705T Twin Bed

48.75"w x 79.75"d x 60.00"h (4 slats)

#### B. 300706Q Queen Bed

69.75"w x 85.75"d x 60.00"h (4 slats)

#### 300706KE Eastern King Bed

85.75"w x 85.75"d x 60.00"h (5 slats)

#### 300706KW California King Bed

81.75"w x 89.75"d x 60.00"h (5 slats)

#### 300706F Full Bed

63.75"w x 79.75"d x 60.00"h (4 slats)

#### C. 300706T Twin Bed

48.75"w x 79.75"d x 60.00"h (4 slats)

Offered as twin size!



C



TM



# EXPLORE THE LIVING ROOM COLLECTIONS



# TAKE A LOOK AT WHAT'S AHEAD!

## LIVING ROOM

Stationary Sectionals.....	22
Stationary Sofa Collections .....	32
Sofa Beds .....	40

Occasional Groups.....	44
Entertainment Units.....	48



## SUMMERLAND SECTIONAL

- Easy reversible chaise construction with storage ottoman
- Classic rolled arm with clean tailoring and wheat herringbone is subtle and adds lofty comfort

- Six accent pillows are included
- Full encased wooden frame
- Kiln dried hardwood frame

- Pocket coil seating
- Webbed seat deck
- Solid wood legs

STATIONARY SECTIONS



## SECTIONAL COMPOSITION

COLOR: **WHEAT**

UPHOLSTERY: **WOVEN HERRINGBONE**

LEG FINISH: **ESPRESSO**

ASSEMBLY TYPE: **RTA**

## STYLED FOR COMFORT

Engineered for quality and then crafted for exceptional support and comfort!



SCOTT  
LIVING

LIVING ROOM

STATIONARY SECTIONALS



### A. 501139 Sectional

121.75"w x 95.75"d x 38.5"h  
Seat 22.00"d x 20.00"h

### B. 705677 End Table

26.00"w x 24.00"d x 24.25"h

### C. 705678 Coffee Table

42.00"w x 24.00"d x 18.00"h

### D. 705679 Sofa Table

48.00"w x 18.00"d x 30.00"h

## PRODUCT HIGHLIGHTS



### CUSHIONS:

Seat: Removable  
Back: Removable



**WEBBED SEAT DECK:** For strength and durability



**POCKET COILED SPRINGS:** Spring base construction for comfort and durability



**ACCENT PILLOWS INCLUDED:** 6 pillows included

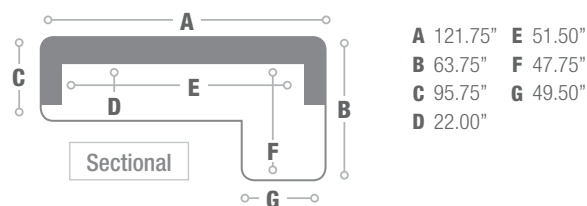


**SOLID WOOD LEGS:** For a durable foundation that holds over time



**REVERSIBLE SET UP:** Creates a unique set up for your personal space

## SPECIFIC MEASUREMENT



Sectional aerial view reflects set-up shown in the above photo. Grey area indicates back cushion or arms.

## EMMETT SECTIONAL

- Slightly arched track arms give a transitional look that is easy to decorate around
- Six accent pillows are included
- Fully encased wooden frame
- Kiln dried hardwood frame
- Pocket coil seating
- Webbed seat deck
- Solid wood legs

STATIONARY SECTIONALS



## SECTIONAL COMPOSITION

COLOR: **BEIGE**

UPHOLSTERY: **PATTERNED WOVEN**

LEG FINISH: **ESPRESSO**

ASSEMBLY TYPE: **RTA**

## HITTING YOUR COMFORT ZONE

Engineered first for quality and then crafted for exceptional style and comfort!



SCOTT  
LIVING

LIVING ROOM

STATIONARY SECTIONALS



### A. 501000 Sectional

120.00"w x 95.00"d x 37.75"h  
Seat 22.50"d x 20.75"h

### B. 705817 End Table

22.00"w x 22.00"d x 24.00"h

### C. 705818 Coffee Table

50.00"w x 28.00"d x 19.00"h

### D. 705819 Sofa Table

48.00"w x 20.00"d x 30.00"h

## PRODUCT HIGHLIGHTS



### CUSHIONS:

Seat: Removable  
Back: Removable



**WEBBED SEAT DECK:** For strength and durability



**POCKET COILED SPRINGS:** Spring base construction for comfort and durability

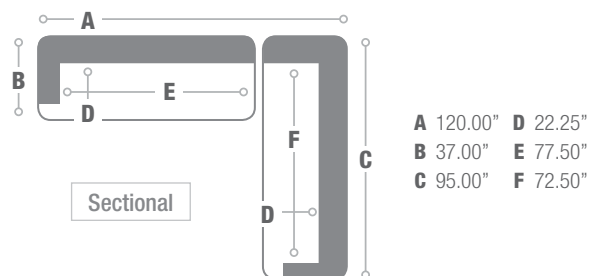


**ACCENT PILLOWS INCLUDED:** 6 pillows included



**SOLID WOOD LEGS:** For a durable foundation that holds over time

## SPECIFIC MEASUREMENT



Sectional aerial view reflects set-up shown in the above photo. Grey area indicates back cushion or arms.

## MONTGOMERY SECTIONAL WITH OTTOMAN

- Sloped track arm gives a sleek shape and the sizing makes this an easy pieces to fit around existing furniture pieces

- Easily reversible chaise construction with storage in the ottoman
- Fully encased wooden frame

- Kiln dried hardwood frame
- Pocket coil seating
- Webbed seat deck

STATIONARY SECTIONS



- Solid wood legs
- Matching storage ottoman also available

Each piece offers a distinct look emphasizing the woods' natural form



**LIVE EDGE**  
HAND PLANED & CHISELED



**SCOTT  
LIVING**

**LIVING ROOM**

## SECTIONAL COMPOSITION

COLOR: CREAM

UPHOLSTERY: CHEVRON CHENILLE

LEG FINISH: ESPRESSO

ASSEMBLY TYPE: RTA

STATIONARY SECTIONS



### A. 501170 Sectional

90.25"w x 64.25"d x 35.00"h

Seat 21.75"d x 20.00"h

### B. 910140 Ottoman

48.25"w x 29.00"d x 20.50"h

### C. 705667 End Table

24.00"w x 24.00"d x 22.00"h

### D. 705668 Coffee Table

50.00"w x 28.00"d x 18.00"h

### E. 705669 Sofa Table

48.00"w x 18.00"d x 30.00"h

## PRODUCT HIGHLIGHTS



### CUSHIONS:

Seat: Reversible  
Back: Reversible



**WEBBED SEAT DECK:** For strength and durability



### REVERSIBLE SET UP:

Creates a unique set up for your personal space



**ACCENT PILLOWS INCLUDED:**  
4 pillows included

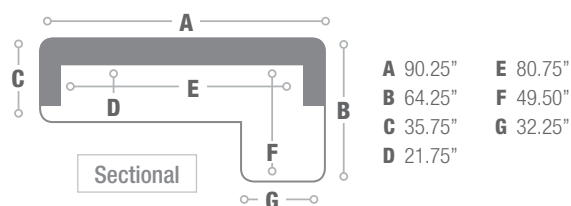


**SOLID WOOD LEGS:** For a durable foundation that holds over time



**OTTOMAN AVAILABLE:** Offers an alternative foot rest or creates extra seating

## SPECIFIC MEASUREMENT



Sectional aerial view reflects set-up shown in the above photo. Grey area indicates back cushion or arms.

## WYLDER SECTIONAL

- Track arms give this a nice tailored look with no extra bulk
- Contrasting pillows add color and brightness to any room
- Fully encased wooden frame

- Modular construction allows you to make this smaller or larger depending on the constraints of your family room

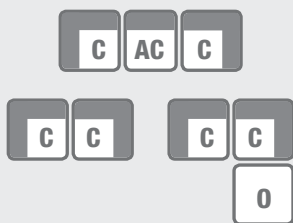
STATIONARY SECTIONS



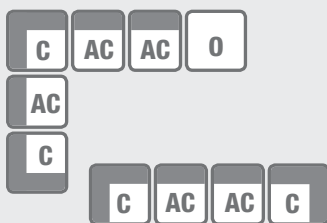
### *Design It Your Way*

Combine corner pieces and armless chairs together to make a sectional or sofa set that fits your needs and style. Don't forget to add an ottoman!

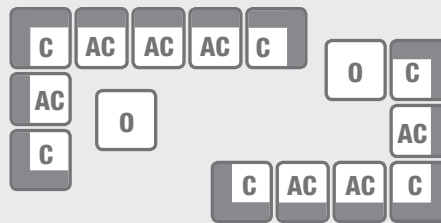
#### FOR SMALL-SIZED LIVING ROOMS:



#### FOR MEDIUM-SIZED LIVING ROOMS:



#### FOR LARGE-SIZED LIVING ROOMS:



- Kiln dried hardwood frame
- Two accent pillows included with LAF, RAF, and corner pieces

- Pocket coil seating
- Webbed seat deck
- Solid wood legs



## DESIGN YOUR MODERN STYLE!

Not all spaces are the same. Fortunately you can create the perfect set to meet your needs!

SCOTT  
LIVING

LIVING ROOM

STATIONARY SECTIONS

### SECTIONAL COMPOSITION

COLOR: **IVORY**

UPHOLSTERY: **LINEN-LIKE**

LEG FINISH: **ESPRESSO**

ASSEMBLY TYPE: **RTA**



#### A. 551311 Armless Chair

32.75"w x 33.75"d x 34.25"h  
Seat 20.00"d x 19.00"h

#### B. 551312 Corner

43.75"w x 43.75"d x 34.25"h  
Seat 28.75"d x 19.00"h

#### C. 551313 Ottoman

39.25"w x 28.50"d x 19.25"h

#### D. 551314LAF LAF Chair

38.50"w x 33.75"d x 34.25"h  
Seat 20.00"d x 19.00"h

#### E. 551314RAF RAF Chair

38.50"w x 33.75"d x 34.25"h  
Seat 20.00"d x 19.00"h

#### F. 705547 End Table

22.00"w x 22.00"d x 22.00"h

#### G. 705548 Coffee Table

50.00"w x 30.00"d x 18.00"h

#### H. 705549 Sofa Table

55.00"w x 18.00"d x 30.00"h



### PRODUCT HIGHLIGHTS



#### CUSHIONS:

Seat: Removable  
Back: Removable



**WEBBED SEAT DECK:** For strength and durability



#### POCKET COILED

**SPRINGS:** Spring base construction for comfort and durability



#### ACCENT PILLOWS

**INCLUDED:** 2 pillows included with corner, LAF and RAF



**OTTOMAN AVAILABLE:** Offers an alternative foot rest or creates extra seating

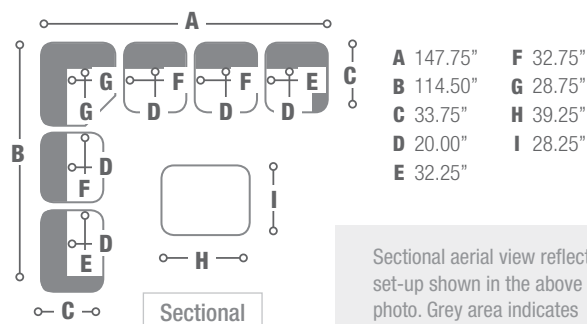


**SOLID WOOD LEGS:** For a durable foundation that holds over time



**REVERSIBLE SET UP:** Creates a unique set up for your personal space

### SPECIFIC MEASUREMENT



Sectional aerial view reflects set-up shown in the above photo. Grey area indicates back cushion or arms.

Ivory linen-like fabric upholstery and accent pillow prints



## CHARLOTTE SECTIONAL

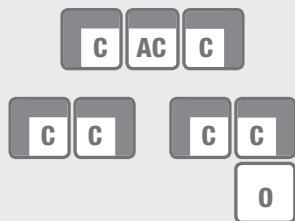
- Modular construction allows you to adjust the sizing of your sofa/sectional to meet the size constraints of your room

- All seats and back cushions are fully reversible
- Seat cushions are feathered down wrapped in both sides

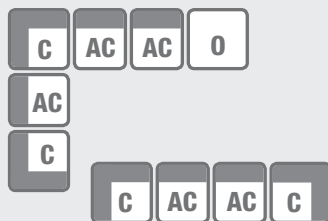


STATIONARY SECTIONALS

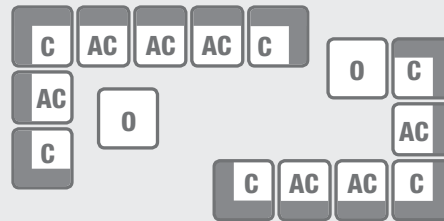
### FOR SMALL-SIZED LIVING ROOMS:



### FOR MEDIUM-SIZED LIVING ROOMS:



### FOR LARGE-SIZED LIVING ROOMS:



### *Design It Your Way*

Combine corner pieces and armless chairs together to make a sectional or sofa set that fits your needs and style. Don't forget to add an ottoman!



Grey linen blend fabric upholstery and accent pillow prints



- Two accent pillows included on both armless piece as well as corner piece
- Fully encased wooden frame

- Kiln dried hardwood frame
- Pocket coil seating
- Matching accent chair also available

- Sinuous spring seat deck
- Solid wood legs



SCOTT  
LIVING

LIVING ROOM

STATIONARY SECTIONS

## SECTIONAL COMPOSITION

COLOR: GREY

UPHOLSTERY: LINEN-LIKE

LEG FINISH: CAPPUCCINO

ASSEMBLY TYPE: KD LEGS



### A. 551221 Armless Chair

39.00"w x 39.00"d x 38.00"h  
Seat 24.00"d x 21.00"h

### B. 551222 Corner

39.00"w x 39.00"d x 38.00"h  
Seat 24.00"d x 21.00"h

### C. 551223 Storage Ottoman

39.00"w x 39.00"d x 21.00"h

### D. 721247 End Table

22.00"w x 20.00"d x 22.00"h

### E. 721248 Lift Top Coffee Table

50.50"w x 23.25"d x 16.50"h

### F. 903402 Accent Chair

24.50"w x 28.25"d x 33.00"h  
Seat 21.00"d x 19.00"h



## PRODUCT HIGHLIGHTS



### CUSHIONS:

Seat: Reversible  
Back: Reversible



WEBBED SEAT DECK: For strength and durability



SINUOUS SPRING BASE: Allows for sleek and sturdy construction



ACCENT PILLOWS INCLUDED: 2 accent pillows included with corner and armless

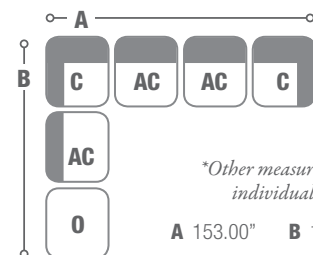


OTTOMAN AVAILABLE: Offers an alternative foot rest or creates extra seating



REVERSIBLE SET UP: Creates a unique set up for your personal space

## SPECIFIC MEASUREMENT



Sectional set-up as shown

*\*Other measurement please refer to individual modular pieces.*

A 153.00" B 115.00" C 39.00"

Sectional aerial view reflects set-up shown in the above photo. Grey area indicates back cushion or arms.

- Elegant double cushion shelter arm styling with tufted detailing on the inside of the back cushions
- Seating is fully reversible
- Adorable faux fur fuzzy pillows are included as shown

- Crystal clear acrylic legs open up the space by giving the sofas an appearance that they're floating
- Fully encased wooden frame

- Kiln dried hardwood frame
- Pocket coil seating
- Sinuous spring seat deck

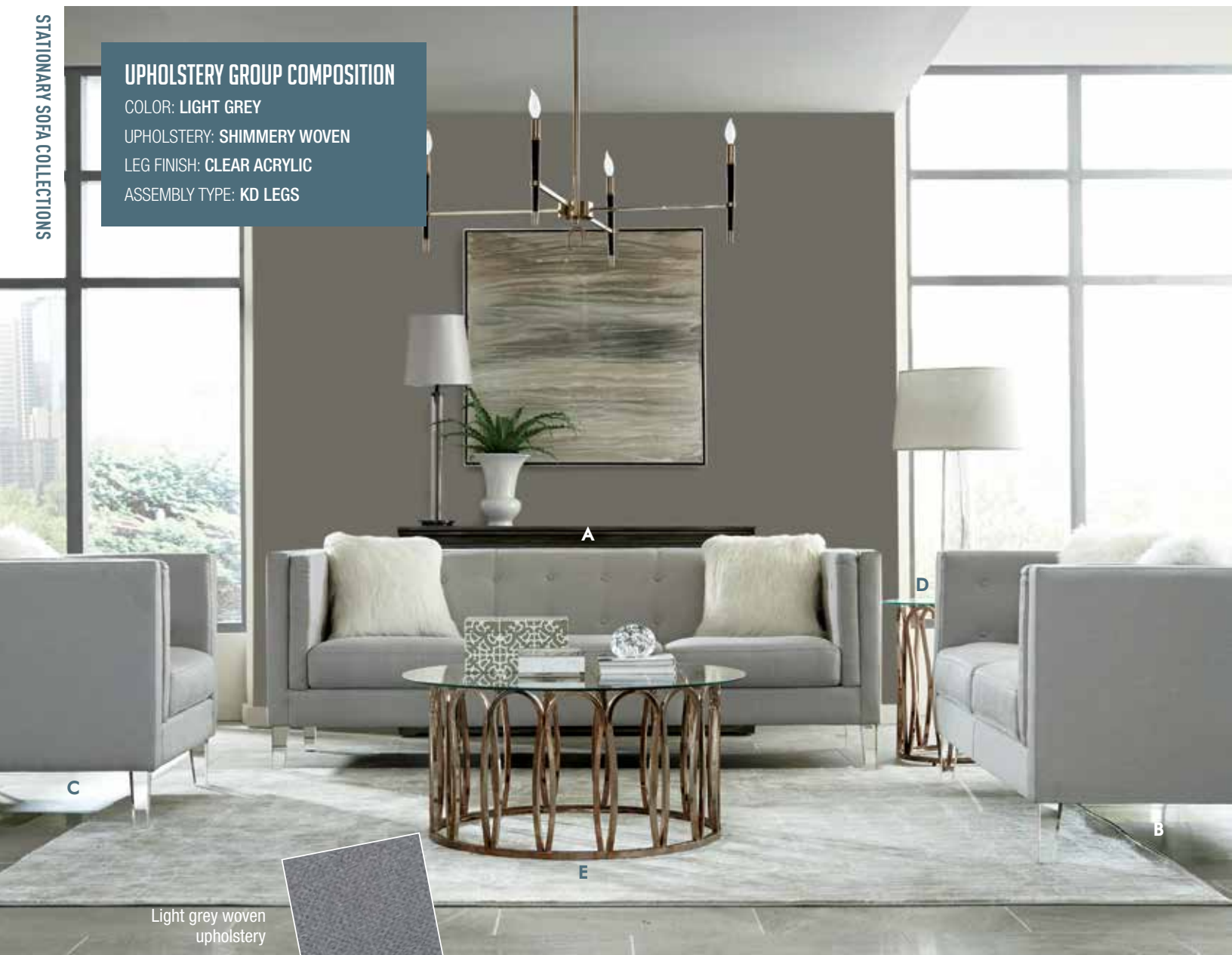
## UPHOLSTERY GROUP COMPOSITION

COLOR: LIGHT GREY

UPHOLSTERY: SHIMMERY WOVEN

LEG FINISH: CLEAR ACRYLIC

ASSEMBLY TYPE: KD LEGS



Light grey woven upholstery

### A. 506211 Sofa

86.50"w x 35.00"d x 31.50"h  
Seat 23.00"d x 20.00"h

### B. 506212 Loveseat

63.00"w x 35.00"d x 31.50"h  
Seat 23.00"d x 20.00"h

### C. 506213 Chair

37.50"w x 35.00"d x 31.50"h  
Seat 23.00"d x 20.00"h

### D. 705787 End Table

23.50"d x 23.50"h

### E. 705788 Coffee Table

39.25"d x 18.75"h

## PRODUCT HIGHLIGHTS



#### CUSHIONS:

Seat: Reversible

Back: Attached



#### SINUOUS SPRING SEAT & BACK:

Allows for sleek and sturdy construction



#### POCKET COILED SPRINGS:

Spring base construction for comfort and durability



#### ACCENT PILLOWS INCLUDED:

2 sofa pillows, 2 loveseat pillows, 1 chair pillow

Adorable faux fur fuzzy pillow included!

Seating is fully reversible!



Acrylic legs for the illusion of extra space.

- Elegant double cushion shelter arm styling with tufted detailing on the inside of the back and arm cushions
- Seating is fully reversible

- Geometric lattice pillows add color in a subtle manner
- Higher frame make the underside easy to access
- Fully encased wooden frame
- Kiln dried hardwood frame

- Pocket coil seating
- Sinuous spring seat deck
- Solid wood legs

## UPHOLSTERY GROUP COMPOSITION

COLOR: DUSTY BLUE

UPHOLSTERY: NUBBY HERRINGBONE

LEG FINISH: CAPPUCCINO

ASSEMBLY TYPE: KD LEGS



Accent pillow printed pattern

Geometric lattice pillow  
included with chair



## PRODUCT HIGHLIGHTS



**CUSHIONS:**  
Seat: Reversible  
Back: Attached



**SINUOUS SPRING SEAT & BACK:** Allows for sleek and sturdy construction



**POCKET COILED SPRINGS:** Spring base construction for comfort and durability



**ACCENT PILLOWS INCLUDED:**  
3 sofa pillows, 2 loveseat pillows,  
1 chair pillow



**SOLID WOOD LEGS:** For a durable foundation that holds over time

### A. 506191 Sofa

81.00"w x 34.00"d x 32.00"h  
Seat 22.00"d x 20.50"h

### B. 506192 Loveseat

61.00"w x 34.00"d x 32.00"h  
Seat 22.00"d x 20.50"h

### C. 506193 Chair

37.50"w x 34.00"d x 32.00"h  
Seat 22.00"d x 20.50"h

### D. 705657 End Table

26.25"w x 25.50"d x 25.75"h

### E. 705658 Coffee Table

52.00"w x 28.00"d x 19.00"h

### F. 705659 Sofa Table

52.25"w x 18.00"d x 29.75"h

- Small scaled track arm sofa that is perfect for most spaces because of the transitional styling and no bulk frame

- Fabric upholstery is multi-tonal so it's pretty visually as well as comfortable from all that extra texture
- Fully encased wooden frame



- Pocket coil seating
- Solid wood legs

Solid mango wood  
top with an X  
parquet design



## A PERFECT MIX!

Beauty and comfort blended with an impressive, well crafted vision!



SCOTT  
LIVING

LIVING ROOM

STATIONARY SOFA COLLECTIONS

### UPHOLSTERY GROUP COMPOSITION

COLOR: **BLUE**

UPHOLSTERY: **MULTI-TONAL WOVEN**

LEG FINISH: **BLACK**

ASSEMBLY TYPE: **RTA**



#### A. 506521 Sofa

86.50"w x 34.75"d x 37.00"h

Seat 21.25"d x 21.75"h

#### B. 506522 Loveseat

62.25"w x 34.75"d x 37.00"h

Seat 21.25"d x 21.75"h

#### C. 506523 Chair

37.50"w x 34.75"d x 37.00"h

Seat 21.25"d x 21.75"h

#### D. 705687 End Table

24.00"w x 22.00"d x 23.00"h

#### E. 705688 Coffee Table

48.00"w x 23.75"d x 20.00"h



### PRODUCT HIGHLIGHTS



#### CUSHIONS:

Seat: Removable  
Back: Removable



#### WEBBED SEAT DECK:

For strength and durability



#### POCKET COILED SPRINGS:

Spring base construction for comfort and durability



#### ACCENT PILLOWS INCLUDED:

2 sofa pillows, 2 loveseat pillows



#### OPTIONAL COLORS:

Color variety helps meet your taste



Fabric upholstery is multi-tonal so it's pretty visually as well as comfortable from all that extra texture

## BROWNSWOOD COLLECTION

- Small scaled track arm sofa that is perfect for most spaces because of the transitional styling and no bulk frame

- Fabric upholstery is multi-tonal so it's pretty visually as well as comfortable from all that extra texture
- Fully encased wooden frame

STATIONARY SOFA COLLECTIONS



- Pocket coil seating
- Solid wood legs

Solid mango wood  
top with an X  
parquet design



## A PERFECT MIX!

Beauty and comfort blended with an impressive, well crafted vision!



SCOTT  
LIVING

LIVING ROOM

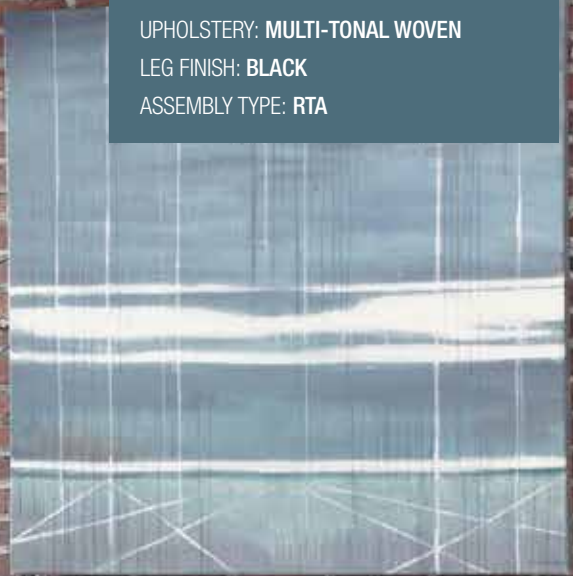
### UPHOLSTERY GROUP COMPOSITION

COLOR: GREY

UPHOLSTERY: MULTI-TONAL WOVEN

LEG FINISH: BLACK

ASSEMBLY TYPE: RTA



B



STATIONARY SOFA COLLECTIONS

LIVE EDGE  
HAND PLANED & CHISELED

#### A. 506531 Sofa

86.50"w x 34.75"d x 37.00"h

Seat 21.25"d x 21.75"h

#### B. 506532 Loveseat

62.25"w x 34.75"d x 37.00"h

Seat 21.25"d x 21.75"h

#### C. 506533 Chair

37.50"w x 34.75"d x 37.00"h

Seat 21.25"d x 21.75"h

#### D. 705817 End Table

22.00"w x 22.00"d x 24.00"h

#### E. 705818 Coffee Table

50.00"w x 28.00"d x 19.00"h

#### F. 705819 Sofa Table

48.00"w x 20.00"d x 30.00"h

### PRODUCT HIGHLIGHTS



#### CUSHIONS:

Seat: Removable  
Back: Removable



#### WEBBED SEAT DECK:

For strength and durability



#### POCKET COILED

SPRINGS: Spring base  
construction for comfort  
and durability



#### ACCENT PILLOWS INCLUDED:

2 sofa pillows, 2  
loveseat pillows



#### OPTIONAL COLORS:

Color variety helps meet  
your taste

C



Fabric upholstery is  
multi-tonal so it's pretty  
visually as well as  
comfortable from all  
that extra texture

- Popular mid-century style with angled legs
- Seat cushions and button tufted back cushions are fully reversible
- Handsome geometric pillows add color without being too bold

- Matching storage ottoman also available
- Fully encased wooden frame
- Kiln dried hardwood frame



Earthy linen fabric upholstery  
and accent pillow print

- Pocket coil seating
- Solid wood legs
- Sinuous spring seat deck

## HITTING YOUR COMFORT ZONE

Engineered first for quality and then crafted for exceptional style and comfort!



SCOTT  
LIVING

LIVING ROOM

### UPHOLSTERY GROUP COMPOSITION

COLOR: LINEN

UPHOLSTERY: PATTERNED WOVEN

LEG FINISH: DARK BROWN

ASSEMBLY TYPE: KD



STATIONARY SOFA COLLECTIONS

#### A. 506171 Sofa

85.50"w x 35.50"d x 38.50"h

Seat 22.00"d x 20.50"h

#### B. 506172 Loveseat

60.50"w x 35.50"d x 38.50"h

Seat 22.00"d x 20.50"h

#### C. 506173 Chair

34.50"w x 35.50"d x 38.50"h

Seat 22.00"d x 20.50"h

#### D. 506174 Storage Ottoman

29.50"w x 29.50"d x 19.50"h

#### E. 705637 End Table

23.50"w x 23.50"d x 21.75"h

#### F. 705638 Coffee Table

47.25"w x 27.50"d x 15.75"h

#### G. 705639 Sofa Table

52.00"w x 15.50"d x 27.50"h

### PRODUCT HIGHLIGHTS



#### CUSHIONS:

Seat: Removable  
Back: Reversible



#### WEBBED SEAT DECK:

For strength and durability



SINUOUS SPRING SEAT  
& BACK: Allows for sleek  
and sturdy construction



#### POCKET COILED SPRINGS:

Spring base construction for  
comfort and durability



#### ACCENT PILLOWS INCLUDED:

2 sofa pillows, 2 loveseat  
pillows, 1 chair pillow

Add this storage ottoman to help create  
space for throws or other accessories.



Chair comes with an  
accent pillow print



Seat cushions and button tufted  
back cushions are fully reversible



- Sofa bed upholstered in blue woven fabric
- Separates into two standalone chairs
- Independently functioning split-back
- Kiln dried hardwood frame
- Sinuous spring decking with high density foam
- Solid hardwood legs

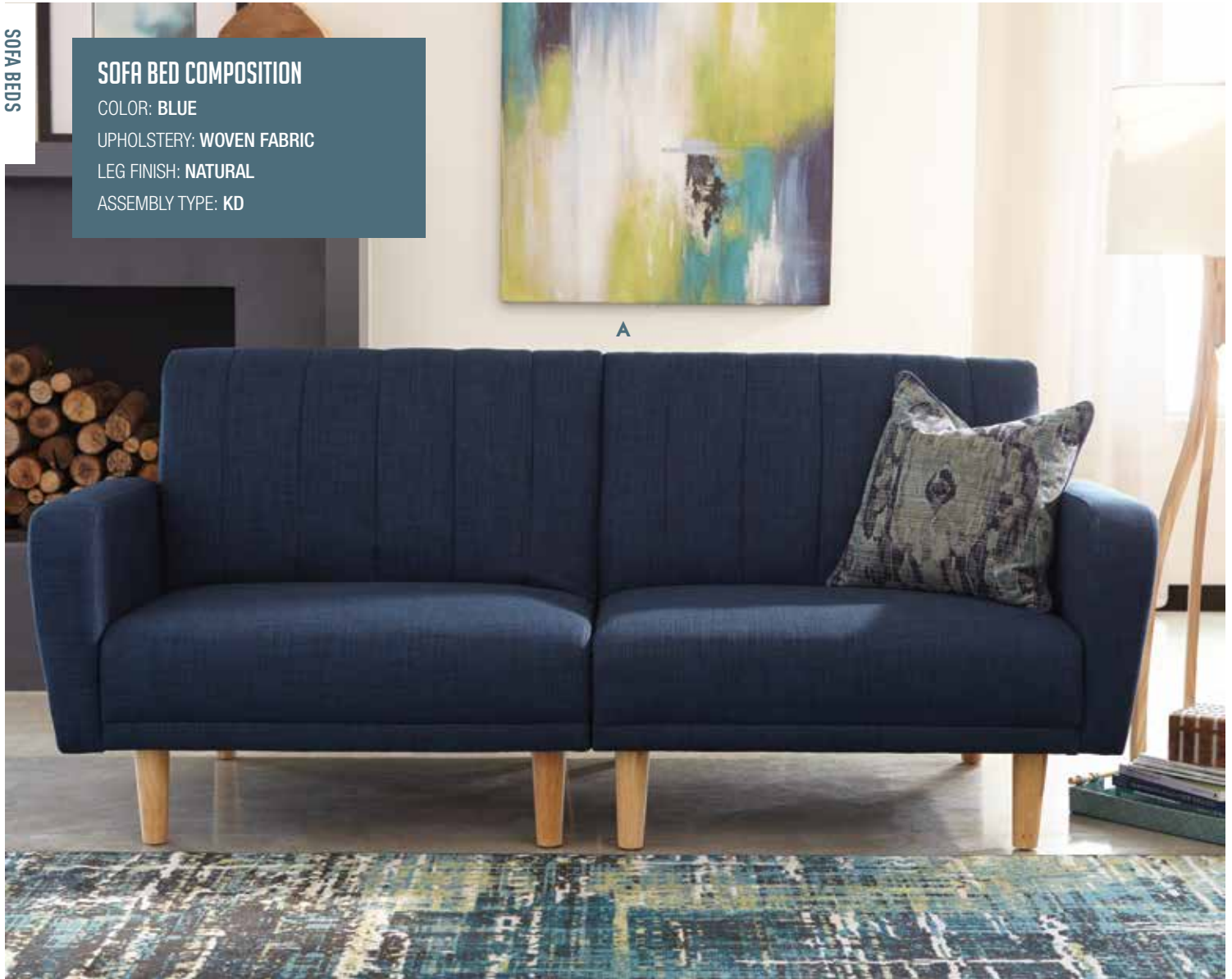
## SOFA BED COMPOSITION

COLOR: **BLUE**

UPHOLSTERY: **WOVEN FABRIC**

LEG FINISH: **NATURAL**

ASSEMBLY TYPE: **KD**



### A. 360013 Sofa Bed

Sofa 84.25"w x 37.50"d x 36.50"h

Seat 22.00"d x 17.75"h

Sofa Bed 84.25"w x 46.75"d x 17.75"h

## PRODUCT HIGHLIGHTS

-  **MULTI-PURPOSE SOFA:** Perfect for overnight house guests
-  **SPLIT-BACK DESIGN:** Independently functioning split-back for versatile adjustment
-  **WOOD FRAME:** Construction made for stability & heavy use
-  **SINUOUS SPRING BASE:** Allows for sleek and sturdy construction
-  **SOLID WOOD LEGS:** For a durable foundation that holds over time



Sofa set-up



Split-back set-up



Sofa bed set-up



## LUSKE SOFA BED

- Sofa bed upholstered in grey woven fabric with white piping
- Button-tufted seat and back
- Kiln dried hardwood frame

- Sinuous spring decking with high density foam
- Solid hardwood legs
- Two bolster pillows included

### SOFA BED COMPOSITION

COLOR: GREY / WHITE

UPHOLSTERY: WOVEN FABRIC

LEG FINISH: NATURAL

ASSEMBLY TYPE: KD



### A. 360022 Sofa Bed

**Sofa** 85.00"w x 30.00"d x 34.25"h

**Seat** 21.50"d x 16.50"h

**Sofa Bed** 85.00"w x 44.50"d x 16.50"h

### PRODUCT HIGHLIGHTS

-  **MULTI-PURPOSE SOFA:** Perfect for overnight house guests
-  **WOOD FRAME:** Construction made for stability & heavy use
-  **SINUOUS SPRING BASE:** Allows for sleek and sturdy construction
-  **SOLID WOOD LEGS:** For a durable foundation that holds over time
-  **TUFTED BACK/SEAT:** Adds a decorative and elegant touch
-  **ACCENT PILLOWS INCLUDED:** 2 pillows included

## CHEYENNE SOFA BED

- Sofa bed upholstered in turquoise blue woven fabric
- Biscuit-tufted seat and back
- Kiln dried hardwood frame
- Sinuous spring decking with high density foam
- Solid hardwood legs
- Accent pillows are not removable

SOFA BEDS

### SOFA BED COMPOSITION

COLOR: **TURQUOISE BLUE**  
UPHOLSTERY: **WOVEN FABRIC**  
LEG FINISH: **WALNUT**  
ASSEMBLY TYPE: **KD**



#### A. 360025 Sofa Bed

Sofa 83.50"w x 35.50"d x 33.00"h

Seat 21.50"d x 18.00"h

Sofa Bed 83.50"w x 43.25"d x 18.00"h

### PRODUCT HIGHLIGHTS

-  **MULTI-PURPOSE SOFA:** Perfect for overnight house guests
-  **WOOD FRAME:** Construction made for stability & heavy use
-  **SINUOUS SPRING BASE:** Allows for sleek and sturdy construction
-  **SOLID WOOD LEGS:** For a durable foundation that holds over time
-  **TUFTED BACK/SEAT:** Adds a decorative and elegant touch



## SKYLER SOFA BED

- Sofa bed upholstered in grey woven fabric
- Button-tufted seat and back
- Kiln dried hardwood frame
- Sinuous spring decking with high density foam
- Solid hardwood legs

SCOTT  
LIVING

LIVING ROOM

SOFA BEDS

### SOFA BED COMPOSITION

COLOR: GREY

UPHOLSTERY: WOVEN FABRIC

LEG FINISH: WALNUT

ASSEMBLY TYPE: KD



### A. 360010 Sofa Bed

Sofa 73.50"w x 33.00"d x 29.50"h

Seat 20.50"d x 16.50"h

Sofa Bed 73.50"w x 38.00"d x 16.50"h

### PRODUCT HIGHLIGHTS

-  **MULTI-PURPOSE SOFA:** Perfect for overnight house guests
-  **WOOD FRAME:** Construction made for stability & heavy use
-  **SINUOUS SPRING BASE:** Allows for sleek and sturdy construction
-  **SOLID WOOD LEGS:** For a durable foundation that holds over time
-  **TUFTED BACK/SEAT:** Adds a decorative and elegant touch

- Transitional X detailing
- Lift top function with two storage compartments
- Comes with casters for easy mobility
- Shelf below for additional storage

- Stylish and contemporary white high gloss finish
- Clean and light to open up your space
- Lift top function with storage within coffee table
- End table has drawer

LIVING ROOM

OCCASIONAL GROUPS



**A. 705687 End Table**  
24.00"w x 22.00"d x 23.00"h  
**B. 705688 Lift Top Coffee Table**  
48.00"w x 23.75"d x 20.00"h



**COMPOSITION**  
FINISH: ESPRESSO  
ASSEMBLY: KD

**C. 721247 End Table**  
22.00"w x 20.00"d x 22.00"h  
**D. 721248 Lift Top Coffee Table**  
50.50"w x 23.25"d x 16.50"h



**COMPOSITION**  
FINISH: GLOSSY WHITE  
ASSEMBLY: KD

- Tapered X base in sanded off black with rough sawn tobacco finish gives this occasional an heirloom piece for years to come
- Unique antique brass hardware makes handling the drawers easy and the full extension glides help you to reach everything inside the four drawers

- Industrial workshop style gives character to any set in your living room
- Solid wood and natural worn in wood makes this easy to match as well
- Matte black corner brackets and industrial looking wheels add a nice contrast for visual interest
- Open shelving for lots of storage



**E. 705637 End Table**  
23.50"w x 23.50"d x 21.75"h  
**F. 705638 Coffee Table**  
47.25"w x 27.50"d x 15.75"h  
**G. 705639 Sofa Table**  
52.00"w x 15.50"d x 27.50"h

**COMPOSITION**  
FINISH: TOBACCO/BLACK SAND-OFF  
ASSEMBLY: KD

**H. 705547 End Table**  
22.00"w x 22.00"d x 22.00"h  
**I. 705548 Coffee Table**  
50.00"w x 30.00"d x 18.00"h  
**J. 705549 Sofa Table**  
55.00"w x 18.00"d x 30.00"h

**COMPOSITION**  
FINISH: NATURAL ROUGH MANGO  
ASSEMBLY: KD

- Solid mango wood top in a light natural finish and with an X parquet design
- The base is solid iron so its very sturdy

- The crank handle is also allows you to adjust the height depending on your needs

- Tapered X base in sanded off black with an ash brown pine top gives the look of a long lasting heirloom piece
- Sofa table with unique antique brass hardware makes handling allows you to reach everything inside the drawers

hardware makes handling allows you to reach everything inside the drawers

SCOTT  
LIVING

LIVING ROOM



**A. 705527 End Table**  
21.00"dia x 24.00"h  
**B. 705528 Coffee Table**  
36.00"dia x 23.00"h



### COMPOSITION

FINISH: NATURAL/BLACK  
ASSEMBLY: KD



**C. 705497 End Table**  
23.50"w x 23.50"d x 21.75"h  
**D. 705498 Coffee Table**  
47.25"w x 27.50"d x 15.75"h  
**E. 705499 Sofa Table**  
52.00"w x 15.50"d x 27.50"h

### COMPOSITION

FINISH: NAOMI ASH/BLACK SAND-OFF  
ASSEMBLY: KD

- Solid Sheesham occasional set in a natural finish gives an organic and grounded/rooted feeling

- Simple lines also help you focus on the beauty of the piece itself

- Very sturdy vintage bourbon occasional set with a plinth base. This set is a very clean industrial style, which makes it easier to style within your home

- Black metal accents throughout for a masculine look
- Sofa table has four full extension drawers
- End table has one full extension glide



**F. 705847 End Table**  
23.00"w x 16.00"d x 24.00"h  
**G. 705848 Coffee Table**  
46.00"w x 30.00"d x 17.00"h  
**H. 705849 Sofa Table**  
47.00"w x 16.00"d x 30.00"h

### COMPOSITION

FINISH: NATURAL SHEESHAM  
ASSEMBLY: KD



**I. 705657 End Table**  
26.25"w x 25.50"d x 25.75"h  
**J. 705658 Coffee Table**  
52.00"w x 28.00"d x 19.00"h  
**K. 705659 Sofa Table**  
52.25"w x 18.00"d x 29.75"h

### COMPOSITION

FINISH: VINTAGE BOURBON  
ASSEMBLY: KD

- Solid mahogany and hickory veneer held to make this live edge table look real
- Adds a nice cost savings from purchasing an actual cross section
- Hairpin metal legs add an airy, mid-century modern feel

- Matching dining also available
- #107781



## COMPOSITION

FINISH: NATURAL HONEY  
ASSEMBLY: KD



**LIVE EDGE**  
HAND PLANED & CHISELED

**A. 705667 End Table**  
24.00"w x 24.00"d x 22.00"h

**B. 705668 Coffee Table**  
50.00"w x 28.00"d x 18.00"h

**C. 705669 Sofa Table**  
48.00"w x 18.00"d x 30.00"h

- Live edge solid wood top has a lot of character and shows every beautiful detail
- Tapered star base adds a more modern look, but an antique pewter finish gives an updated look to traditionally heavy rustic pieces
- Matching live edge dining also available



**LIVE EDGE**  
HAND PLANED & CHISELED



## COMPOSITION

FINISH: DARK RUSTIC BROWN  
ASSEMBLY: KD

**D. 705817 End Table**  
22.00"w x 22.00"d x 24.00"h

**E. 705818 Coffee Table**  
50.00"w x 28.00"d x 19.00"h

**F. 705819 Sofa Table**  
48.00"w x 20.00"d x 30.00"h

- Solid pine table top in a rustic brown finish and contrasting black solid wood legs, makes this perfectly palatable group for your sofa or sectional, especially given the smaller size!

- Great for small spaces
- Additional storage space in the shelf below
- Matches 701062 TV Stand

- Black iron tapered drum/ base contrasts nicely against the natural reclaimed wood top

- The round shape makes this great to pair with sectionals or smaller sofas, and adds visual interest with varying colors on the table top



**A. 705677 End Table**  
26.00"w x 24.00"d x 24.25"h  
**B. 705678 Coffee Table**  
44.00"w x 24.00"d x 18.00"h  
**C. 705679 Sofa Table**  
48.00"w x 18.00"d x 30.00"h

### COMPOSITION

FINISH: RUSTIC BROWN/BLACK  
ASSEMBLY: KD



**D. 705536 Side Table**  
14.00"dia x 22.00"h  
**E. 705537 End Table**  
24.00"dia x 22.00"h  
**F. 705538 Coffee Table**  
36.00"dia x 22.00"h

### COMPOSITION

FINISH: NATURAL RECLAIMED WOOD/  
BLACK IRON  
ASSEMBLY: FULLY SET UP

- This coffee table set is airy for your living room due to the openings of the chocolate chrome base and clarity of the glass table top

- The finish on the table base helps create a slightly modern look which adds a more neutral warm chocolate chrome that is easier to match than traditional brass

- Soft X sides with a cleaner finish and distressed details
- Stretcher bar with supports add an industrial look
- Our warm brown finish also contrasts nicely against the matte black finish



**G. 705787 End Table**  
24.00"dia x 23.50"h  
**H. 705788 Coffee Table**  
39.25"dia x 18.75"h

### COMPOSITION

FINISH: CHOCOLATE CHROME  
ASSEMBLY: KD

 **TEMPERED GLASS:** Provides strength & durability



**I. 700866 3PC Occasional Group**  
End Table 24.00"w x 24.00"d x 24.00"h  
Coffee Table 48.00"w x 24.00"d x 19.00"h

### COMPOSITION

FINISH: BROWN  
ASSEMBLY: KD

- Solid natural sheesham wood with a live edge on the table surface

- Shelves and cabinets provide lots of storage for your living room

- Higher profile, which is currently trending and increasingly popular



A

#### UNIT COMPOSITION

FINISH: NATURAL/BLACK  
MAX TV SIZE: 60"  
MAX TV WEIGHT: 100 LBS  
ASSEMBLY: FULLY SET UP



A



**A. 700890 Live Edge TV Console**  
60.00"w x 16.00"d x 31.00"h



**LIVE EDGE**  
HAND PLANED & CHISELED

Trending live edge surface shows off the wood detail



#### ATTICUS TV CONSOLE

- Very popular live edge table top design
- Ashier finish with fully hidden drawer storage
- Low profile and great for larger TVs



**LIVE EDGE**  
HAND PLANED & CHISELED

**B. 701055 TV Console**  
60.00"w x 18.00"d x 24.00"h

#### UNIT COMPOSITION

FINISH: HAZELNUT  
MAX TV SIZE: 60"  
MAX TV WEIGHT: 100 LBS  
ASSEMBLY: KD



B

## BRECKINRIDGE TV CONSOLE

- A great statement piece for your home given the large size and hefty scale
- Plenty of display storage as well as closed storage behind the glass cabinet
- Great for long narrow space, an entry way or kitchen

SCOTT  
LIVING  
LIVING ROOM

ENTERTAINMENT UNITS



**A. 701036 TV Console**  
75.00"w x 16.00"d x 35.00"h

### UNIT COMPOSITION

FINISH: DARK CAPPUCCINO  
MAX TV SIZE: 75"  
MAX TV WEIGHT: 350 LBS  
ASSEMBLY: KD



**TEMPERED GLASS:** Provides strength & durability

- Three open shelves with three storage drawers below to help keep your living room items neat and organized
- Low profile and great for larger TVs

**A. 701060 TV Console**  
60.00"w x 18.00"d x 24.00"h

**UNIT COMPOSITION**

FINISH: WARM BROWN  
MAX TV SIZE: 60"  
MAX TV WEIGHT: 100 LBS  
ASSEMBLY: KD

ENTERTAINMENT UNITS



A

**WYLDER TV  
CONSOLE**

- Solid pine table top in a rustic brown finish and contrasting black solid wood legs, makes this a perfectly palatable group for your living room
- Matches #705677-705679 occasional set to complete the room

**B. 701062 TV Console**  
57.75"w x 18.00"d x 26.00"h

**UNIT COMPOSITION**

FINISH: RUSTIC BROWN/BLACK  
MAX TV SIZE: 55"  
MAX TV WEIGHT: 100 LBS  
ASSEMBLY: KD



B

## MACY TV CONSOLE

- Open display shelving for your living room, especially when you have minimal devices but still want to have a nice TV stand
- Lots of shelving for open spaced storage

**A. 701039 TV Console**  
60.00"w x 17.00"d x 27.00"h

SCOTT  
LIVING

LIVING ROOM

ENTERTAINMENT UNITS

### UNIT COMPOSITION

FINISH: WALNUT  
MAX TV SIZE: 60"  
MAX TV WEIGHT: 350 LBS  
ASSEMBLY: KD



A

## TRISTA TV CONSOLE

- Taller TV cabinets are great for homes that have more vertical space than horizontal
- Includes open shelving, storage shelves behind clear cabinets, and storage drawers
- Hardware has a very nice tarnished gold finish

**B. 701045 TV Console**  
52.00"w x 15.50"d x 34.75"h

### UNIT COMPOSITION

FINISH: BLACK  
MAX TV SIZE: 50"  
MAX TV WEIGHT: 350 LBS  
ASSEMBLY: KD



B

SCOTT  
LIVING



# EXPLORE THE DINING ROOM COLLECTIONS





# TAKE A LOOK AT WHAT'S AHEAD!

## DINING ROOM

Dining .....	54
Dining Chairs .....	94



- Rustic industrial style dining utilizes elements of metal, and wood
- Liquid coated metal tops have hand applied nail tacks and burnished patina

- Add our kubu rattan chair for an organic element
- Chairs can be used with or without slip covers

- Matching kitchen cart with casters for easy mobility
- Exclusively for Scott Living

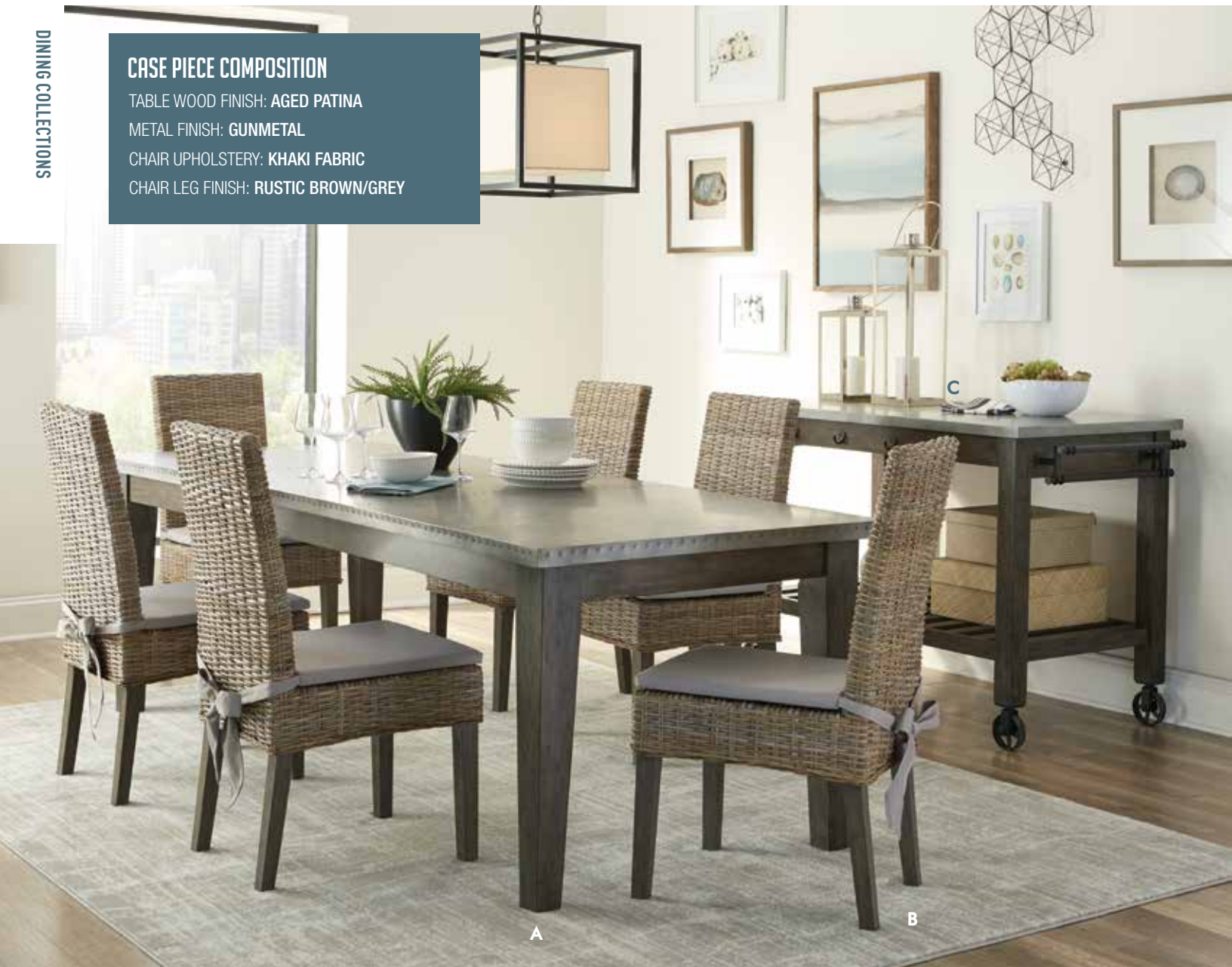
## CASE PIECE COMPOSITION

TABLE WOOD FINISH: AGED PATINA

METAL FINISH: GUNMETAL

CHAIR UPHOLSTERY: KHAKI FABRIC

CHAIR LEG FINISH: RUSTIC BROWN/GREY



- A. 107941 Dining Table**  
92.25"l x 38.25"w x 30.50"h
- B. 103803 Side Chair**  
18.50"w x 23.75"d x 38.75"h  
Seat 18.00"d x 19.00"h
- C. 100527 Kitchen Island**  
50.25"w x 28.00"d x 36.50"h

## PRODUCT HIGHLIGHTS



**PRODUCT MATERIALS:**  
Table: white oak, mahogany veneer  
Chair: Solid mahogany+rattan



**CUSHIONED SEATING:** For ultimate comfort and support



**NAIL TACK TRIM ACCENTS:** Individually hand placed nail tack trim



Liquid coated metal table top has hand applied nail tacks and burnished patina



- Clean line design showcases the beautiful solid wood grain
- Crafted of solid Sheesham wood which has very high density and known for its beautiful wood grain and color

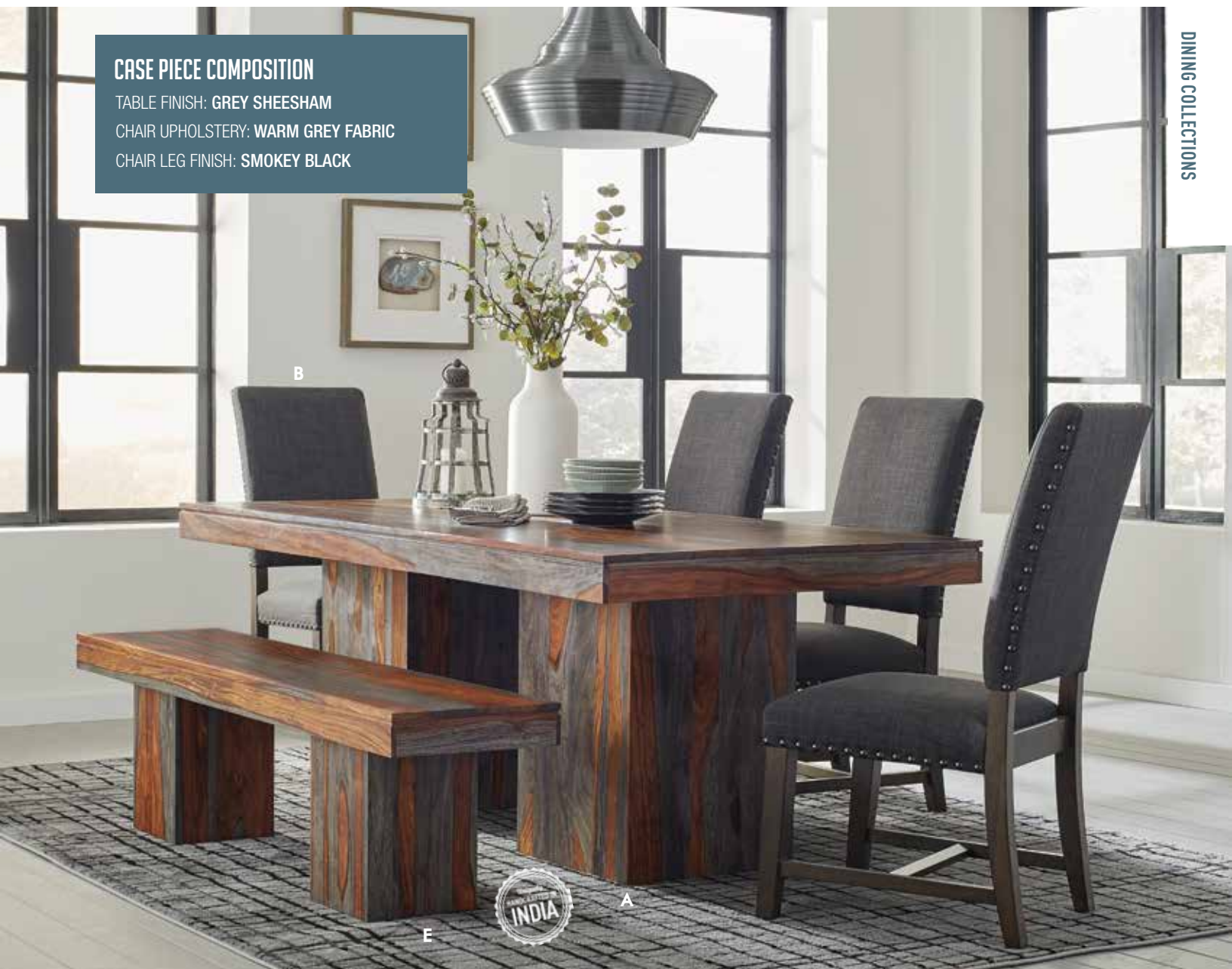
- Matching parson chair has nailhead trim and comes in grey or beige fabric
- Exclusively for Scott Living

## CASE PIECE COMPOSITION

TABLE FINISH: GREY SHEESHAM

CHAIR UPHOLSTERY: WARM GREY FABRIC

CHAIR LEG FINISH: SMOKEY BLACK



## PRODUCT HIGHLIGHTS



**PRODUCT MATERIALS:**  
Wood type: Sheesham wood  
Chair: Asia hardwood



**CUSHIONED SEATING:** For ultimate comfort and support



**OPTIONAL CHAIR COLORS:** Create a stronger design statement

### A. 107481 Dining Table

86.00"l x 46.00"w x 30.00"h

### B. 102819 Parson Chair, Warm Grey

20.50"w x 26.25"d x 42.00"h

Seat 19.00"d x 19.50"h

### C. 102820 Parson Chair, Beige

20.50"w x 26.25"d x 42.00"h

Seat 19.00"d x 19.50"h

### D. 103130 Parson Chair, Granite

18.00"w x 25.75"d x 43.75"h

Seat 21.25"d x 19.00"h

### E. 107483 Bench

64.00"w x 15.00"d x 18.00"h



Beige  
Fabric  
mix and  
match



Granite  
Fabric

## HILLSBOROUGH COLLECTION

- Is there any wood more beautiful than Sheesham wood? Imported from India, table and bench come in a rich honey finish

- Clean lines and with a rustic look create a clean organic wood statement
- Demi wing back parson chairs with dark finished legs

DINING COLLECTIONS



C

B

A



- Chairs have seat frame construction and webbed seating for extra comfort offered in three color choices
- Exclusively for Scott Living

## EXPERIENCED CRAFTSMANSHIP

Each piece is thoughtfully designed so you can create the perfect dining room look in your home!.



DINING ROOM

DINING COLLECTIONS



### A. 107501 Dining Table

80.00"l x 40.00"w x 30.00"h

### B. 103129 Parson Chair, Barley

18.00"w x 25.75"d x 43.75"h

Seat 18.00"d x 19.50"h

### C. 107503 Bench

64.00"w x 15.00"d x 18.00"h

### D. 103128 Parson Chair, Ash

18.00"w x 25.75"d x 43.75"h

Seat 18.00"d x 19.50"h

### E. 103130 Parson Chair, Granite

18.00"w x 25.75"d x 43.75"h

Seat 18.00"d x 19.50"h



Create alternative seating for three dinner guests by adding the side bench



## PRODUCT HIGHLIGHTS



### PRODUCT MATERIALS:

Wood type: Sheesham wood  
Chair: Asia hardwood



CUSHIONED SEATING: For ultimate comfort and support



### OPTIONAL CHAIR COLORS:

Create a stronger design statement



Ash  
Fabric

**mix and  
match**



Granite  
Fabric

- Live Edge is simply the most important new statement in dining decor

- Solid Sheesham wood in a stunning grey finish to contrast against the matte black metal

- Server offers storage space and anchors the room offering a stylish design with a floating solid wood top and metal framework



**LIVE-EDGE**  
HAND PLANED & CHISELED

- Add a modern twist with the Danish style upholstered chairs
- Exclusively for Scott Living

## INTRODUCING SOMETHING UNIQUE

The unique appeal of our Live Edge table and bench tops offer a distinct look that promotes the wood's natural form!



SCOTT  
LIVING

DINING ROOM



### A. 107511 Live Edge Dining Table

80.00"l x 40.00"w x 30.00"h

### B. 103547 Side Chair, Cognac

22.00"w x 22.50"d x 31.50"h

Seat 17.00"d x 19.25"h

### C. 107852 Side Chair, Charcoal

19.00"w x 22.50"d x 35.00"h

Seat 16.00"d x 18.50"h

### D. 107513 Live Edge Dining Bench

70.00"w x 16.00"d x 18.00"h

### E. 107515 Live Edge Server

69.00"w x 18.00"d x 36.00"h

## PRODUCT HIGHLIGHTS



**PRODUCT MATERIALS:**  
Wood type: Sheesham wood



**STORAGE SPACE:** Stores away personal items



**CUSHIONED SEATING:** For ultimate comfort and support



**OPTIONAL CHAIR COLORS:**  
Create a stronger design statement



**MATCHING SERVER/CHINA:**  
Adds extra storage space



Live Edge server has four storage compartments with two open shelves for styling



**B** Cognac  
Leatherette



**C** Charcoal  
Leatherette

mix and  
match

Walnut leg finish

Gunmetal leg  
finish

- Spectacular steam punk style dining table that has a heavy solid iron metal base
- Table has a working hand crank to adjust height from dining to counter

- Table top is hand hammered with an aged patina
- Woven Kubu rattan chairs bring a relaxed attitude to your décor

- Mix and match with any chair to create your own look
- Exclusively for Scott Living

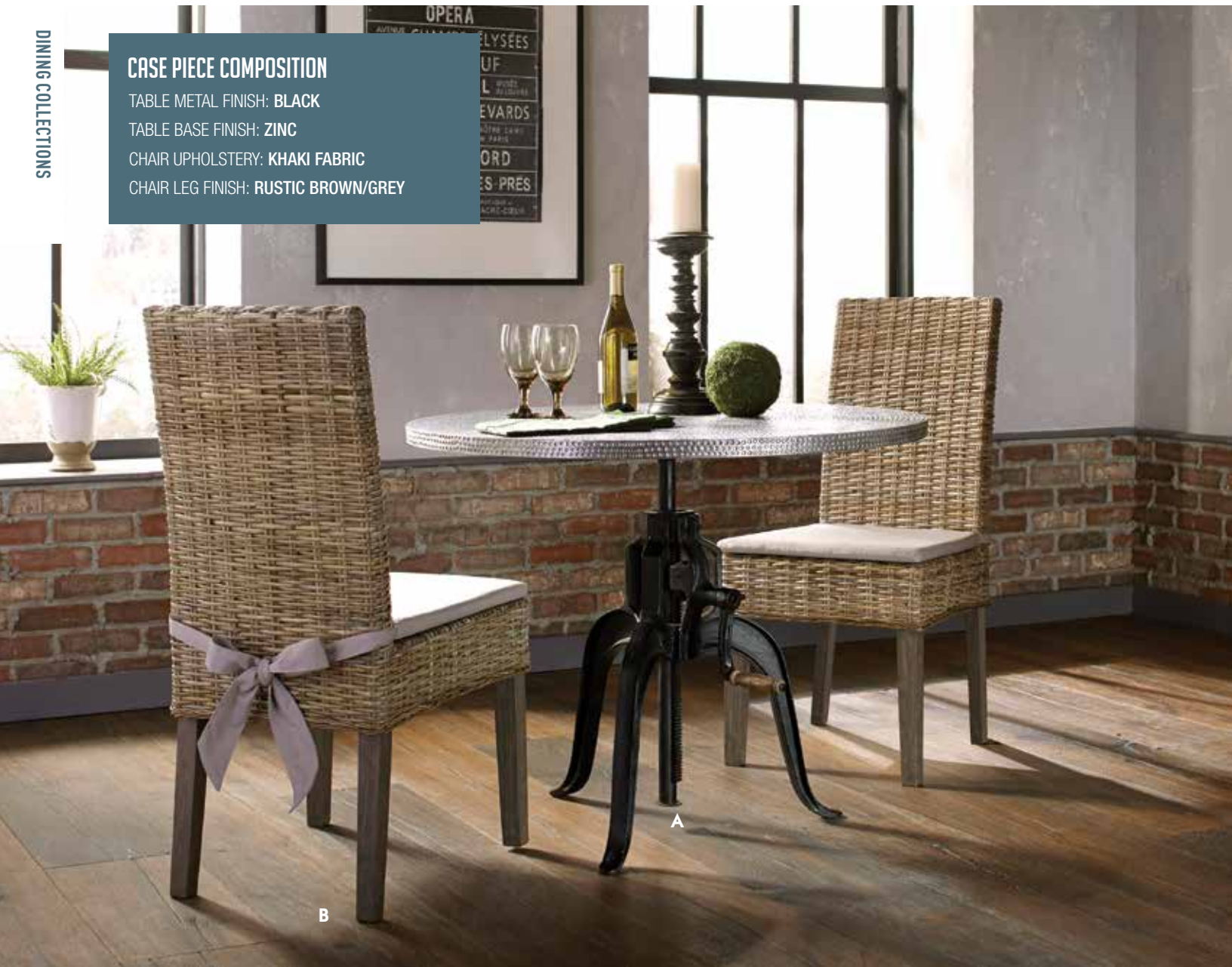
## CASE PIECE COMPOSITION

TABLE METAL FINISH: BLACK

TABLE BASE FINISH: ZINC

CHAIR UPHOLSTERY: KHAKI FABRIC

CHAIR LEG FINISH: RUSTIC BROWN/GREY



**A. 107540 Metal Crank Table**  
30.00"dia x 30.00" - 36.00"h

**B. 103803 Side Chair**  
18.50"w x 23.75"d x 38.75"h  
Seat 18.00"d x 19.00"h

## PRODUCT HIGHLIGHTS



**PRODUCT MATERIALS:**  
Table: Iron  
Chair: Solid mahogany+rattan



**ADJUSTABLE TABLE:** Easily adjust for your needs



**MIX & MATCH:** Combine pieces to match your personal style

ADJUSTABLE  
HEIGHT

Easily adjust height  
from dining to  
counter with the  
hand crank!



A

## EXPERIENCED CRAFTSMANSHIP

Each piece is thoughtfully designed by experienced craftsmen in India. Each piece has it's own story!



- The ultimate Bohemian style statement is to have a special hand crafted piece in your room
- Dining metal table is crafted of metal with hand-hammered table top and a stunningly shaped table base

- Beautiful reproduction of vintage New Classical French oval back chair
- Chairs have fluted legs and are upholstered in linen-like cover

- Mix and match with any chair to create your own look
- Exclusively for Scott Living

### CASE PIECE COMPOSITION

TABLE METAL FINISH: **ZINC**

TABLE BASE FINISH: **ZINC**

SEAT UPHOLSTERY: **GREY LINEN-LIKE FABRIC**

LEG FINISH: **BLACK WIRE BRUSH**

DINING COLLECTIONS

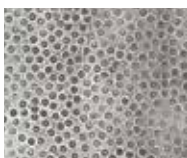


A

B



Dining table is crafted of metal with hard-hammered table top



Chairs have fluted legs and are upholstered in linen-like cover

B

### A. 107550 Round Dining Table

50.00"dia x 30.00"h

### B. 103066 Side Chair

20.00"w x 23.50"d x 39.50"h

Seat 17.50"d x 19.50"h

### PRODUCT HIGHLIGHTS



#### PRODUCT MATERIALS:

Table: Iron  
Chair: Asian hardwood



**CUSHIONED SEATING:** For ultimate comfort and support



**MIX & MATCH:** Combine pieces to match your personal style

- A home is made special with unique, stand-out pieces that are hand crafted to perfection
- Crafted of solid wood mango wood inlays with metal table base

- Chevron pattern on table top and server
- Add our kubu rattan chair for an organic element
- Exclusively for Scott Living



B

A



## EXPERIENCED CRAFTSMANSHIP

Each piece is thoughtfully designed by experienced artisans in India, which makes each piece unique.



### CASE PIECE COMPOSITION

TABLE WOOD FINISH: **NATURAL MANGO**

TABLE METAL FINISH: **MATTE BLACK**

CHAIR UPHOLSTERY: **KHAKI FABRIC**

CHAIR LEG FINISH: **RUSTIC BROWN/GREY**



DINING COLLECTIONS

#### A. 107561 Dining Table

71.00"l x 35.00"w x 30.00"h

#### B. 103803 Side Chair

18.50"w x 23.75"d x 38.75"h

Seat 18.00"d x 19.00"h

#### C. 107565 Server

54.00"w x 18.00"d x 31.00"h

### PRODUCT HIGHLIGHTS



#### PRODUCT MATERIALS:

Table: Mango wood, iron  
Chair: Solid mahogany+rattan



#### SERVER HARDWARE FINISH:

Matte black handles



**CUSHIONED SEATING:** For ultimate comfort and support



**STORAGE SPACE:** Stores away personal items



#### MATCHING SERVER/CHINA:

Adds extra storage space

Chevron pattern top on table and server are crafted in India so each piece has slight, distinct variations.



Create additional storage space with the matching server



- Rustic craftsman style table updated with a wire brushed black finish
- Counter height table has a thick sturdy top and can be used in smaller spaces

- Bucket shaped plastic seating is strong and comfortable
- Pair with counter height stools in black dyed goat leather covered seats and antiqued brass finished metal bases
- Exclusively for Scott Living

## CASE PIECE COMPOSITION

TABLE FINISH: ANTIQUE BLACK

SEAT UPHOLSTERY: MATTE BLACK LEATHER

LEG FINISH: ANTIQUE BRASS



### A. 100738 Counter Height Table

60.00"l x 30.00"w x 36.00"h

### B. 102967 Counter Height Stool

17.00"w x 18.00"d x 28.50"h

Seat 14.00"d x 24.00"h

## PRODUCT HIGHLIGHTS

**PRODUCT MATERIALS:**  
Table: Pine wood  
Chair: Iron, leather

**ANTI-SLIP GUARDS:** Helps to keep chair in place when in use

B



Anti-slip guards to keep chair in place



Matte black leather

- European traditional style updated with a wire brushed black finish
- Round 48" table seats four chairs comfortably

- Beautiful reproduction of vintage New Classical French oval back chair
- Chairs have fluted legs and are upholstered in linen-like cover
- Exclusively for Scott Living

### CASE PIECE COMPOSITION

TABLE FINISH: **ANTIQUE BLACK**

SEAT UPHOLSTERY: **GREY LINEN-LIKE FABRIC**

LEG FINISH: **BLACK WIRE BRUSH**



Eye catching! Table features wire brushed detail in an antique black finish.



Chairs have fluted legs and are upholstered in linen-like cover

**B**

**A. 107650 Dining Table**  
48.00"dia x 30.00"h

**B. 103066 Side Chair**  
20.00"w x 23.50"d x 39.50"h  
Seat 17.50"d x 19.50"h

### PRODUCT HIGHLIGHTS



**PRODUCT MATERIALS:**  
Table: Pine wood, birch wood veneer  
Chair: Asian hardwood



**CUSHIONED SEATING:** For ultimate comfort and support

- Industrial chic design finds beauty in utilitarian design by using worn wood texture in a gorgeous bourbon wire brushed finish
- The marriage of metal and wood creates a strong and warm look

- Table has a 20" removable extension leaf
- Choose stout wood back or parson chairs to create your own flavor

## CASE PIECE COMPOSITION

TABLE WOOD FINISH: VINTAGE BOURBON

TABLE METAL FINISH: MATTE BLACK

SEAT UPHOLSTERY: GREY FABRIC

LEG FINISH: VINTAGE BOURBON



- A. 107721 Dining Table**  
80.00"l x 44.00"w x 30.00"h
- B. 107722 Side Chair**  
21.25"w x 24.50"d x 41.25"h  
Seat 17.00"d x 18.50"h
- C. 107724 Side Chair**  
19.50"w x 26.25"d x 42.75"h  
Seat 17.50"d x 19.50"h
- D. 107723 Arm Chair**  
23.50"w x 24.50"d x 41.25"h  
Seat 17.00"d x 18.50"h
- E. 107725 Bench**  
68.00"w x 21.50"d x 35.00"h
- F. 107726 Server**  
68.00"w x 19.00"d x 44.00"h

## PRODUCT HIGHLIGHTS



**20" REMOVABLE TABLE EXTENSION LEAF:** Extends the surface of table top for additional dinner guests

**PRODUCT MATERIALS:**

Table & Server: Acacia, acacia veneer  
Chairs: Acacia wood, metal



**CUSHIONED SEATING:** For ultimate comfort and support



**SERVER HARDWARE FINISH:**  
Matte black



**MATCHING SERVER:**  
Adds extra storage space



**MIX & MATCH:** Combine pieces to match your personal style

Padded  
grey fabric  
seat cover



B



D

- Matching server with finished drawer boxes and felt lined top drawers
- Exclusively for Scott Living

## INDULGE YOURSELF IN PERFECTION

Put together the perfect dining room set! We offer a large selection of pieces that unite together to become a unique collection.



DINING ROOM

DINING COLLECTIONS



F



### CASE PIECE COMPOSITION

TABLE WOOD FINISH: VINTAGE BOURBON

TABLE METAL FINISH: MATTE BLACK

SEAT UPHOLSTERY: GREY FABRIC

LEG FINISH: VINTAGE BOURBON

A

C

F

Oversized bench helps to add extra seating



E

Padded grey fabric cover



C

Matching server with finished drawer boxes and felt lined top drawers



F

- Traditional style dining is updated with today's glamorous details
- Table has a 20" removable extension leaf to accommodate guests
- Arm chair and bench are fully upholstered with button-tufted seat and hand applied nailhead trim

- Server has antique mirror glass panels
- Refreshing weathered finish in light Barley brown tone
- Exclusively for Scott Living



# HITTING YOUR COMFORT ZONE

Engineered first for quality and then crafted for exceptional style and comfort!



DINING ROOM

## CASE PIECE COMPOSITION

TABLE FINISH: BARLEY BROWN

SEAT UPHOLSTERY: CREAM FABRIC

LEG FINISH: BARLEY BROWN



DINING COLLECTIONS

### A. 107731 Dining Table

84.25"-104.25"l x 46.00"w x 30.00"h

### B. 107732 Side Chair

22.00"w x 28.25"d x 41.25"h

Seat 19.50"d x 19.25"h

### C. 107733 Arm Chair

26.50"w x 29.75"d x 43.00"h

Seat 25.25"d x 20.00"h

### D. 107735 Server

79.25"w x 20.00"d x 33.75"h

### E. 107737 Wingback Bench

60.00"w x 28.25"d x 41.00"h

## PRODUCT HIGHLIGHTS

 **20" REMOVABLE TABLE EXTENSION LEAF:** Extends the surface of table top for additional dinner guests

 **PRODUCT MATERIALS:**  
Table & Server: Asian hardwood, ash veneer, antique mirror  
Chairs: Acacia hardwood

 **CUSHIONED SEATING:** For ultimate comfort and support

 **SERVER HARDWARE FINISH:** Gunmetal black

 **MATCHING SERVER:** Adds extra storage space

 **OPTIONAL FINISHES:** Color variety helps meet your taste



E

Arm chair and wingback bench are fully upholstered with button-tufted seat and hand applied nailhead trim



B



C

## GLEN COVE COLLECTION

- Traditional style dining is updated with today's glamorous details
- Table has a 20" removable extension leaf to accommodate guests
- Arm chair is fully upholstered with button-tufted seat and hand applied nailhead trim

- Server has antique mirror glass panels
- Refreshing deep finish in antique java
- Exclusively for Scott Living

DINING COLLECTIONS



# HITTING YOUR COMFORT ZONE

Engineered first for quality and then crafted for exceptional style and comfort!



DINING ROOM

## CASE PIECE COMPOSITION

TABLE FINISH: ANTIQUE JAVA

SEAT UPHOLSTERY: CREAM FABRIC

LEG FINISH: ANTIQUE JAVA



DINING COLLECTIONS

### A. 107981 Dining Table

84.25" - 104.25"l x 46.00"w x 30.00"h

### B. 107982 Side Chair

22.00"w x 28.25"d x 41.25"h

Seat 19.50"d x 19.25"h

### C. 107983 Arm Chair

26.50"w x 29.75"d x 43.00"h

Seat 25.25"d x 20.00"h

### D. 107985 Server

79.25"w x 20.00"d x 33.75"h

### E. 107987 Wingback Bench

60.00"w x 28.25"d x 41.00"h

## PRODUCT HIGHLIGHTS

 **20" REMOVABLE TABLE EXTENSION LEAF:** Extends the surface of table top for additional dinner guests

 **PRODUCT MATERIALS:**  
Table & Server: Asian hardwood, ash veneer, antique mirror  
Chairs: Acacia hardwood

 **CUSHIONED SEATING:** For ultimate comfort and support

 **SERVER HARDWARE FINISH:** Gunmetal black

 **MATCHING SERVER:** Adds extra storage space

 **OPTIONAL FINISHES:** Color variety helps meet your taste



E

Arm chair and wingback bench are fully upholstered with button-tufted seat and hand applied nailhead trim

- Clean lines with a rustic wood finish for a brand new transitional gem
- Fixed top dining table with bold square legs
- Ergonomically shaped back parson chairs upholstered in grey fabric

- Chairs have wrapped foam at front for extra comfort
- Exclusively for Scott Living

## CASE PIECE COMPOSITION

TABLE FINISH: **DRIFTED ACACIA**

SEAT UPHOLSTERY: **GREY FABRIC**

CHAIR LEG FINISH: **DRIFTED ACACIA**



- A. 107751 Dining Table**  
78.75"l x 39.50"w x 30.25"h
- B. 107752 Side Chair**  
19.75"w x 23.00"d x 42.75"h  
Seat 17.00"d x 20.00"h

## PRODUCT HIGHLIGHTS

**PRODUCT MATERIALS:**  
Table: Asian hardwood, acacia veneer and select woods  
Chair: Asian hardwood

**CUSHIONED SEATING:** For ultimate comfort and support



Transitional style fixed table top has a rustic wood finish that emphasizes the natural beauty of the wood



Grey fabric side chairs have wrapped foam at front for extra comfort

- Inspired by French farmhouse design in a drifted pine and dark coffee wood finish with metal details

- Curved back slats chair with upholstered cushion seat and handle cutout

- Stand alone server with china top for added storage
- Exclusively for Scott Living

## CASE PIECE COMPOSITION

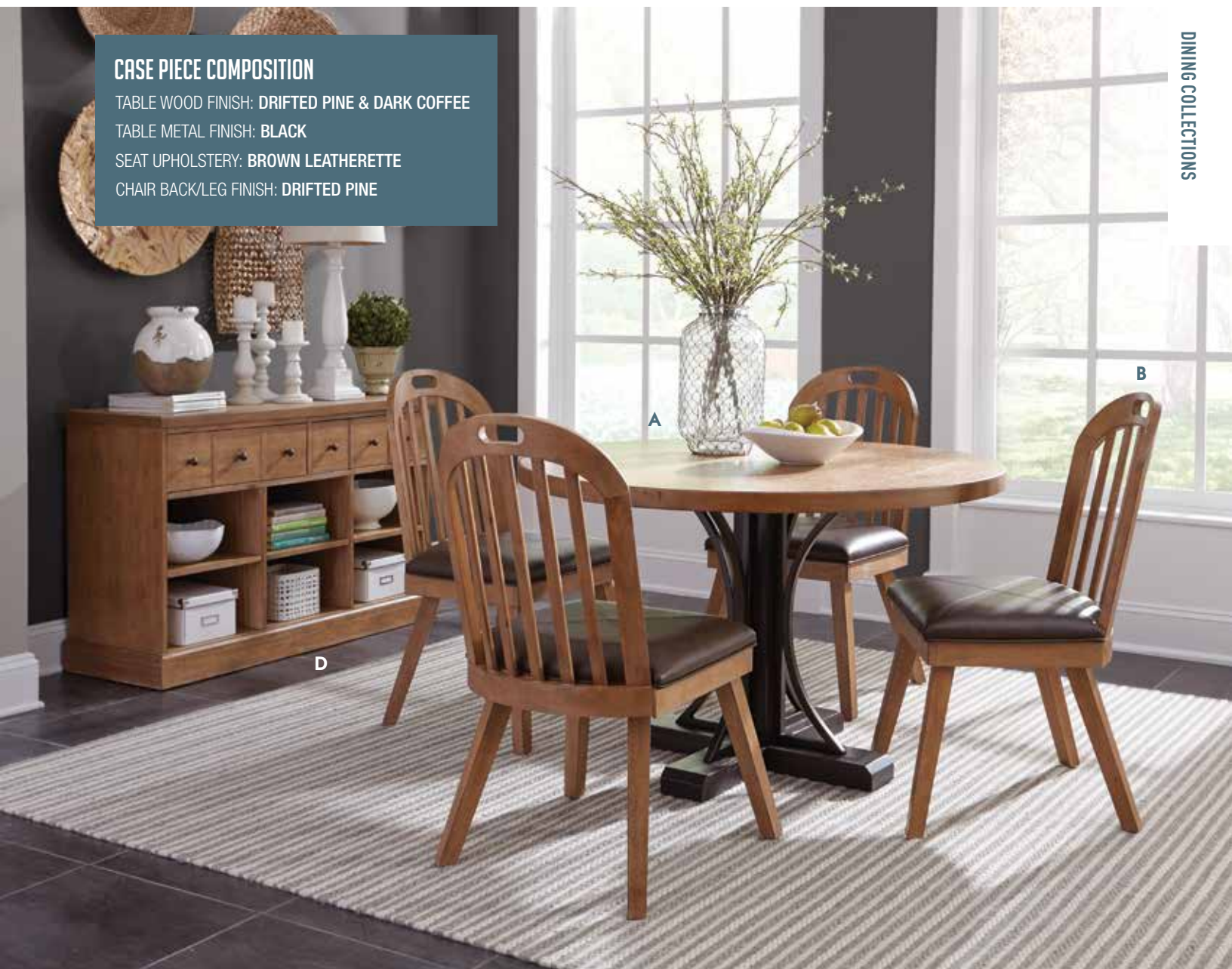
TABLE WOOD FINISH: **DRIFTED PINE & DARK COFFEE**

TABLE METAL FINISH: **BLACK**

SEAT UPHOLSTERY: **BROWN LEATHERETTE**

CHAIR BACK/LEG FINISH: **DRIFTED PINE**

DINING COLLECTIONS



## PRODUCT HIGHLIGHTS

- PRODUCT MATERIALS:**  
Table & Server: Asia hardwood, oak veneer and select woods  
Chairs: Mahogany, Kubu
- CUSHIONED SEATING:** For ultimate comfort and support
- SERVER HARDWARE FINISH:**  
Black
- MATCHING SERVER/CHINA:** Adds extra storage space

**A. 107760 Round Dining Table**  
48.00" dia x 30.25"h

**B. 107762 Side Chair**  
19.00"w x 23.75"d x 37.75"h  
Seat 18.25"d x 19.75"h

**C. 107764 Server/China**  
48.00"w x 18.00"d x 80.00"h

**D. 107764B Server**  
48.00"w x 18.00"d x 32.00"h



## BISHOP COLLECTION

- Inspired by French farmhouse design in a drifted pine and dark coffee wood finish with metal details
- Curved back slats chair with upholstered cushion seat and handle cutout

- Stand alone server with china top for added storage
- Exclusively for Scott Living

DINING COLLECTIONS



# INDULGE YOURSELF IN PERFECTION

Put together the perfect dining room set! We offer a large selection of pieces that unite together to become a unique collection.



DINING ROOM

## CASE PIECE COMPOSITION

TABLE WOOD FINISH: DRIFTED PINE & DARK COFFEE

TABLE METAL FINISH: BLACK

SEAT UPHOLSTERY: BROWN LEATHERETTE

CHAIR BACK/LEG FINISH: DRIFTED PINE



Also offered as a round table. Perfect for smaller spaces! See previous page for details.

DINING COLLECTIONS

### A. 107761 Dining Table

88.00"l x 38.00"w x 30.25"h

### B. 107762 Side Chair

19.00"w x 23.75"d x 37.75"h

Seat 18.25"d x 19.75"h

### C. 107763 Bench

78.00"w x 15.00"d x 19.25"h

### D. 107764 Server/China

48.00"w x 18.00"d x 80.00"h

### E. 107764B Server

48.00"w x 18.00"d x 32.00"h

## PRODUCT HIGHLIGHTS

**PRODUCT MATERIALS:**  
Table+Server: Asian hardwood, oak veneer and select woods  
Chairs: Asian hardwood, leatherette foam

**CUSHIONED SEATING:**  
For ultimate comfort and support

**SERVER HARDWARE FINISH:**  
Black

**MATCHING SERVER/CHINA:**  
Adds extra storage space

**DRAWER CONSTRUCTION:**  
Pin joint

**DRAWER GLIDES:**  
Metal extension glides



Extended matching bench can be added to create alternative seating for dinner guests

Dark coffee wood finish with metal details create a modern rustic feel



## SUTHERS COLLECTION

- Live-Edge dining series tables and benches provide a hand-crafted statement in your home
- Using U.S. hickory veneer and solid wood edge band to create a realistic live edge look with metal T-base legs

- Each table and bench top has natural knots, nature's imperfections and hand inlaid bow ties
- A great parson chair with hand applied nailhead trim covered in plush chenille

DINING COLLECTIONS



**LIVE-EDGE**  
HAND PLANED & CHISELED

- Chair with seat frame construction with Pirelli webbing
- Exclusively for Scott Living

## INTRODUCING SOMETHING UNIQUE

The unique appeal of our Live Edge table and bench tops offer a distinct look that promote the wood's natural form!



DINING ROOM

### CASE PIECE COMPOSITION

TABLE WOOD FINISH: NATURAL HONEY

TABLE METAL FINISH: ANTIQUE BLACK

SEAT UPHOLSTERY: WARM GREY AND BEIGE FABRIC

LEG FINISH: SMOKEY BLACK



**LIVE-EDGE**  
HAND PLANED & CHISELED



DINING COLLECTIONS

#### A. 107771 Live Edge Dining Table

89.75"l x 39.75"w x 30.25"h

#### B. 102819 Side Chair, Warm Grey

20.50"w x 26.25"d x 42.00"h

Seat 19.00"d x 19.50"h

#### C. 102820 Side Chair, Beige

20.50"w x 26.25"d x 42.00"h

Seat 19.00"d x 19.50"h

#### D. 107773 Live Edge Bench

70.75"w x 15.75"d x 18.25"h

#### E. 107775 Live Edge Server

60.00"w x 16.00"d x 36.00"h

### PRODUCT HIGHLIGHTS



#### PRODUCT MATERIALS:

Table+Server: Mahogany, hickory veneer, metal, particle board  
Chairs: Asian hardwood



#### SERVER HARDWARE

FINISH: Gunmetal handles



**MATCHING SERVER:** Adds extra storage space



**OPTIONAL CHAIR COLORS:** Color variety helps meet your taste



**MIX & MATCH:** Combine pieces to match your personal style

Matching server also available. Keep dinnerware and other important items near.



- Live-Edge dining series tables and benches provide a hand-crafted statement in your home
- Using U.S. hickory veneer and solid edge band to create a realistic live edge look

- Each table and bench top has natural knots, nature's imperfections and hand inlaid bow ties
- Hair pin legs have powder coated finish with runner cleats at the bottom to protect wood floors



**LIVE-EDGE**  
HAND PLANED & CHISELED

- Chair has seat frame construction and Pirelli webbing
- Exclusively for Scott Living

## INTRODUCING SOMETHING UNIQUE

The unique appeal of our Live Edge tables and bench tops offer a distinct look that promote the wood's natural form!



DINING ROOM

### CASE PIECE COMPOSITION

TABLE WOOD FINISH: **NATURAL HONEY**

TABLE METAL FINISH: **GUNMETAL**

SEAT UPHOLSTERY: **WARM GREY AND BEIGE FABRIC**

LEG FINISH: **SMOKEY BLACK**



**LIVE-EDGE**  
HAND PLANED & CHISELED

DINING COLLECTIONS



A

#### A. 107781 Live Edge Dining Table

90.00"l x 41.75"w x 30.00"h

#### B. 102819 Side Chair, Warm Grey

20.50"w x 26.25"d x 42.00"h

Seat 19.00"d x 19.50"h

#### C. 102820 Side Chair, Beige

20.50"w x 26.25"d x 42.00"h

Seat 19.00"d x 19.50"h

#### D. 107783 Live Edge Bench

70.75"w x 16.00"d x 18.00"h

#### E. 107775 Live Edge Server

60.00"w x 16.00"d x 36.00"h

### PRODUCT HIGHLIGHTS



**PRODUCT MATERIALS:**  
Table+Server: Mahogany,  
hickory veneer, metal  
Chairs: Asian hardwood



**MATCHING SERVER:** Adds extra  
storage space



**OPTIONAL CHAIR COLORS:** Color  
variety helps meet your taste



**SERVER HARDWARE  
FINISH:** Antique brass



**MIX & MATCH:** Combine pieces  
to match your personal style

Matching server also available. Keep dinnerware  
and other important items near.



E

- Live-Edge dining series tables and benches provide a hand-crafted statement in your home
- Using U.S. hickory veneer and solid edge band to create a realistic live edge look

- Solid wood Farmhouse style trestle base with true tenons
- Each table and bench top has natural knots, nature's imperfections and hand inlaid bow ties

- Tufted back demi wing parson chairs in linen-like cover
- Exclusively for Scott Living

## CASE PIECE COMPOSITION

TABLE TOP FINISH: NATURAL HONEY

TABLE LEG FINISH: ESPRESSO

SEAT UPHOLSTERY: BEIGE LINEN-LIKE FABRIC

LEG FINISH: DARK BROWN



### A. 107791 Live Edge Dining Table

90.00"l x 41.75"w x 30.00"h

### B. 100703 Side Chair, Beige

22.00"w x 27.50"d x 41.00"h

Seat 19.00"d x 19.50"h

### C. 107793 Live Edge Bench

70.75"w x 16.00"d x 18.00"h

### D. 107775 Live Edge Server

60.00"w x 16.00"d x 36.00"h

## PRODUCT HIGHLIGHTS



### PRODUCT MATERIALS:

Table+Server: Mahogany, hickory veneer  
Chairs: Asian hardwood



### SERVER HARDWARE FINISH:

Gunmetal



**MATCHING SERVER:** Adds extra storage space



**OPTIONAL CHAIR COLORS:** Color variety helps meet your taste



**MIX & MATCH:** Combine pieces to match your personal style

Matching server also available. Keep dinnerware and other important items near.



- Live-Edge dining series tables and benches provide a hand-crafted statement in your home
- Using U.S. hickory veneer and solid edge band to create a realistic live edge look

- Extra thick table top sits on top of a solid wood Amish style trestle base
- Each table and bench top has natural knots, nature's imperfections and hand inlaid bow ties

- Chair has seat frame construction and Pirelli webbing
- Exclusively for Scott Living

## CASE PIECE COMPOSITION

TABLE TOP FINISH: **NATURAL HONEY**

TABLE LEG FINISH: **CHARCOAL**

SEAT UPHOLSTERY: **ASH MATTE VELVET**

LEG FINISH: **WARM GREY**



Pair your favorite upholstered fabric color with the Marquette dining table!



Ash matte velvet



Granite matte velvet



Matching server also available. Keep dinnerware and other important items near.

## PRODUCT HIGHLIGHTS



**PRODUCT MATERIALS:**  
Table+Server: Mahogany, hickory veneer  
Chairs: Asian hardwood



**SERVER HARDWARE FINISH:**  
Antique brass



**MATCHING SERVER:** Adds extra storage space



**OPTIONAL CHAIR COLORS:**  
Color variety helps meet your taste



**MIX & MATCH:** Combine pieces to match your personal style

### **A. 107801 Live Edge Dining Table**

90.00"l x 44.00"w x 30.25"h

### **B. 103128 Side Chair, Ash**

18.00"w x 25.75"d x 43.75"h

Seat 18.00"d x 19.50"h

### **C. 103130 Side Chair, Granite Matte**

18.00"w x 25.75"d x 43.75"h

Seat 18.00"d x 19.50"h

### **D. 107803 Live Edge Bench**

70.75"w x 16.00"d x 18.00"h

### **E. 107775 Live Edge Server**

60.00"w x 16.00"d x 36.00"h

- Bring the feel of loft living into your home with this sleek, industrial chic design
- Server and table have concrete composite tops that are easy to care for and perfect for busy homes

- Retro chairs are stylish and comfortable with tufted seating
- Metal bases have gunmetal finish
- Exclusively for Scott Living

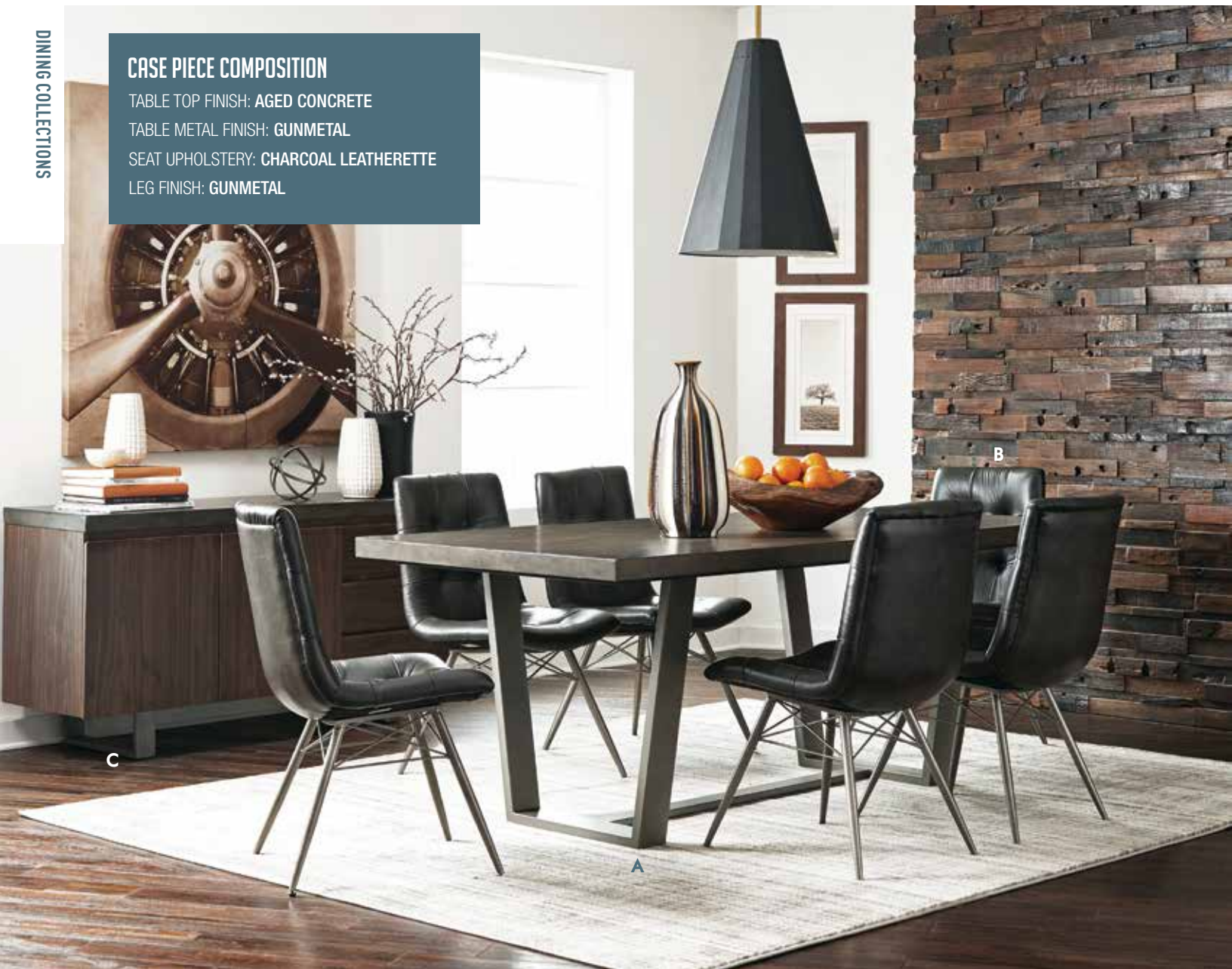
## CASE PIECE COMPOSITION

TABLE TOP FINISH: AGED CONCRETE

TABLE METAL FINISH: GUNMETAL

SEAT UPHOLSTERY: CHARCOAL LEATHERETTE

LEG FINISH: GUNMETAL

**A. 107851 Dining Table**

78.00"l x 38.00"w x 30.00"h

**B. 107852 Side Chair**

19.00"w x 22.50"d x 35.00"h

Seat 18.50"d x 16.00"hv

**C. 107855 Server**

60.00"w x 18.00"d x 30.00"h

## PRODUCT HIGHLIGHTS

**PRODUCT MATERIALS:**Table: Pine wood, walnut veneer  
Chair: Plywood, metal, leatherette**CUSHIONED SEATING:** For ultimate comfort and support**MATCHING SERVER:**

Adds extra storage space

Display your favorite dinnerware or keepsakes while keeping your necessary dinner items hidden



- Industrial design compliments open space living with the look of hand-crafted favorite vintage pieces

- Table and server have solid wood tops distressed to resemble live-edge tops with angled tapered metal legs

- Retro chairs are stylish and comfortable with tufted seating
- Server is over the top perfect! Also can be used as a TV console

- Exclusively for Scott Living

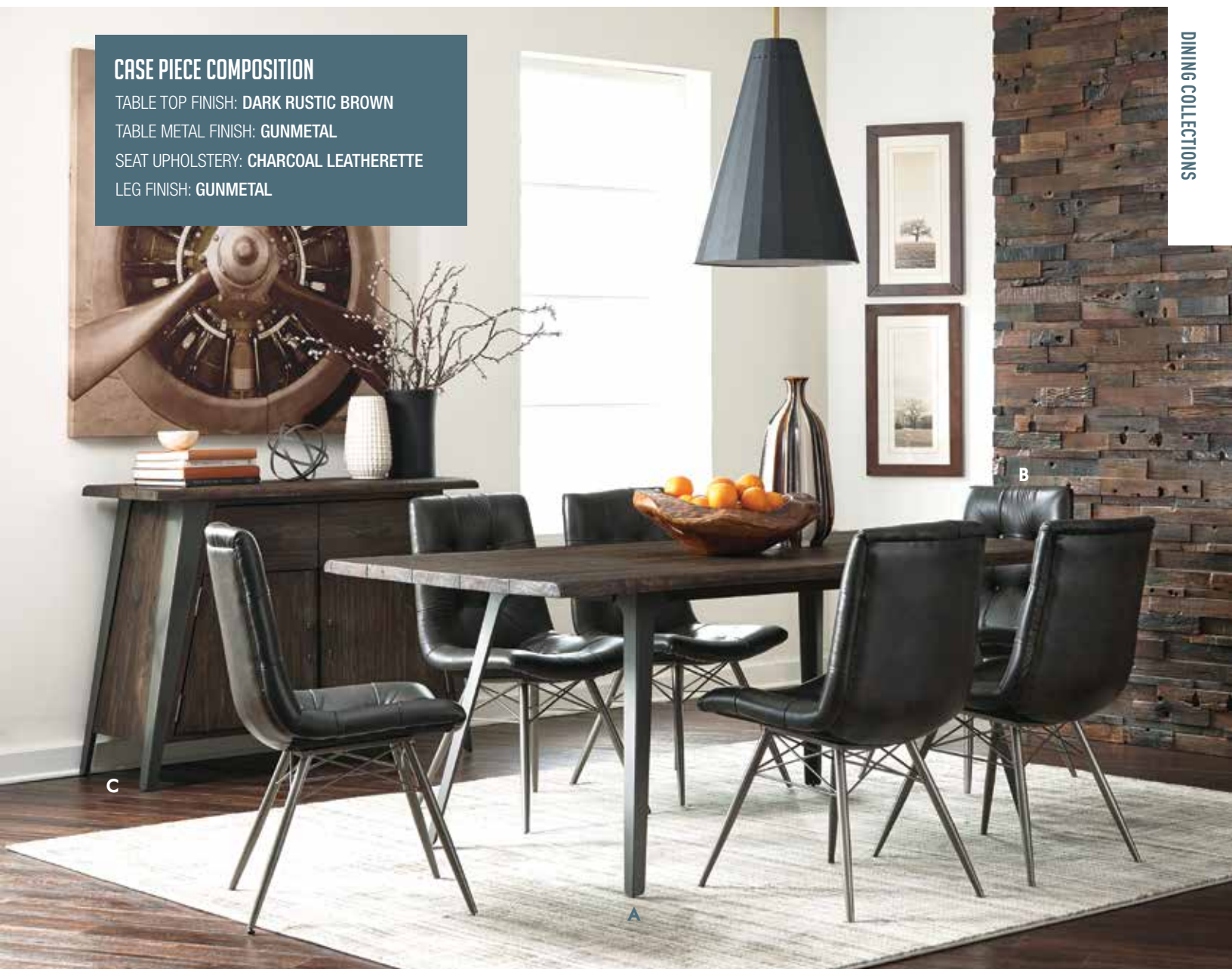
### CASE PIECE COMPOSITION

TABLE TOP FINISH: **DARK RUSTIC BROWN**

TABLE METAL FINISH: **GUNMETAL**

SEAT UPHOLSTERY: **CHARCOAL LEATHERETTE**

LEG FINISH: **GUNMETAL**



Display your favorite dinnerware or keepsakes while keeping your necessary dinner items hidden

### PRODUCT HIGHLIGHTS



**PRODUCT MATERIALS:**  
Table: Pine wood, walnut veneer  
Chair: Plywood, metal, leatherette



**CUSHIONED SEATING:** For ultimate comfort and support



**MATCHING SERVER:**  
Adds extra storage space

**A. 107861 Dining Table**  
78.00"l x 38.00"w x 30.00"h

**B. 107852 Side Chair**  
19.00"w x 22.50"d x 35.00"h  
Seat 18.50"d x 16.00"h

**C. 107865 Server**  
48.00"w x 18.00"d x 36.00"h

- Distinctive style that grabs attention from the next room
- Glass top floats on walnut veneer sculptural table base
- Strong 10mm clear tempered glass top

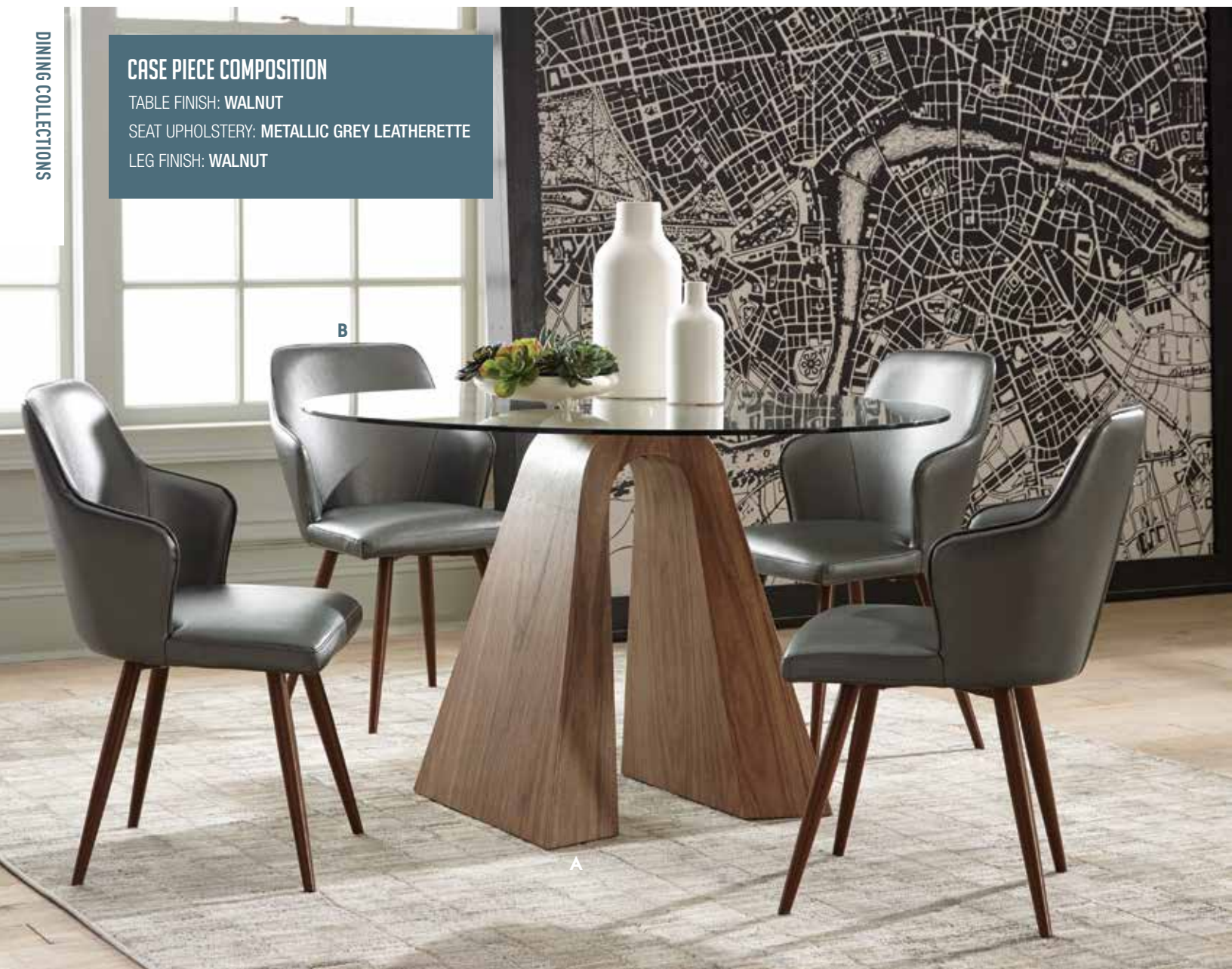
- Upholstered demi arm chairs in metallic grey leatherette cover and tapered round legs
- Exclusively for Scott Living

## CASE PIECE COMPOSITION

TABLE FINISH: WALNUT

SEAT UPHOLSTERY: METALLIC GREY LEATHERETTE

LEG FINISH: WALNUT



### A. 107921 Dining Table

47.25"dia x 29.50"h

### B. 107922 Side Chair

20.25"w x 22.00"d x 32.00"h

Seat 16.50"d x 19.00"h

## PRODUCT HIGHLIGHTS



### PRODUCT MATERIALS:

Table Base: Walnut veneer, select woods

Chair: Plywood



**CUSHIONED SEATING:** For ultimate comfort and support



**TEMPERED GLASS:** Provides strength & durability



Upholstered demi arm chairs in metallic grey leatherette cover and tapered round leg



- Create your own environment with this versatile dining table. Its angles legs and black nickel finish bring forth a fresh modern look
- Strong 10mm clear tempered glass top

- Chairs offered in green, grey, and blue velvet
- Chairs have metal round tapered legs in black nickel finish
- Exclusively for Scott Living

## CASE PIECE COMPOSITION

FINISH: **BLACK NICKEL**

SEAT UPHOLSTERY: **GREEN, GREY, AND BLUE VELVET**

LEG FINISH: **BLACK NICKEL**



## PRODUCT HIGHLIGHTS



**PRODUCT MATERIALS:**  
Table: 10mm tempered glass, metal  
Chair: Plywood, metal



**CUSHIONED SEATING:** For ultimate comfort and support



**TEMPERED GLASS:** Provides strength & durability



**MIX & MATCH:** Combine pieces to match your personal style

- A. 107571 Dining Table**  
72.00"l x 36.00"w x 30.00"h
- B. 107952 Side Chair, Green**  
20.75"w x 24.00"d x 34.50"h  
Seat 18.50"d x 18.75"h
- C. 107953 Side Chair, Grey**  
20.75"w x 24.00"d x 34.50"h  
Seat 18.50"d x 18.75"h
- D. 107954 Side Chair, Blue**  
20.75"w x 24.00"d x 34.50"h  
Seat 18.50"d x 18.75"h

- Bring a modern swanky fun look to your home with this retro style dining group
- Table has walnut veneered top and a strong metal base

- Chairs are height adjustable to your liking
- Chairs offered in blue and chartreuse fabric
- Exclusively for Scott Living



## HITTING YOUR COMFORT ZONE

Engineered first for quality and then crafted for for exceptional style and comfort!



DINING ROOM

### CASE PIECE COMPOSITION

TABLE WOOD FINISH: WALNUT

TABLE METAL FINISH: BLACK

SEAT UPHOLSTERY: BLUE AND CHARTREUSE FABRIC

LEG FINISH: CHROME



DINING COLLECTIONS

**A. 107590 Dining Table**  
40.00"dia x 30.00"h

**B. 102965 Side Chair, Blue**  
23.50"w x 25.00"d x 32.00"- 36.75"h  
Seat 16.50"d x 17.00"- 21.75" h

**C. 102966 Side Chair, Chartreuse**  
23.50"w x 25.00"d x 32.00"- 36.75"h  
Seat 16.50"d x 17.00"- 21.75" h

### PRODUCT HIGHLIGHTS

**PRODUCT MATERIALS:**  
Table: Select woods, walnut veneer, metal  
Chair: Plywood, metal

**CUSHIONED SEATING:**  
For ultimate comfort and support



**ADJUSTABLE BAR TABLE:**  
Easily adjust for your needs



**MIX & MATCH:** Combine pieces to match your personal style

Mix and match your favorite chair color with the Montoya dining table. Chairs offered in blue and chartreuse fabric



Blue  
Fabric

Chartreuse  
Fabric

- Stunning contemporary style table with high gloss white top and tapered metal legs
- Chairs are upholstered in plush, soft velvet in the color options

- Beautiful black nickel metal finish
- Exclusively for Scott Living



# HITTING YOUR COMFORT ZONE

Engineered first for quality and then crafted for exceptional style and comfort!



DINING ROOM

## CASE PIECE COMPOSITION

TABLE WOOD FINISH: GLOSSY WHITE

TABLE METAL FINISH: BLACK NICKEL

SEAT UPHOLSTERY: GREEN, GREY, AND BLUE VELVET

LEG FINISH: BLACK NICKEL



DINING COLLECTIONS

### A. 107951 Dining Table

72.00"l x 38.00"w x 30.00"h

### B. 107952 Dining Chair, Green

20.75"w x 24.00"d x 34.50"h

Seat 18.50"d x 18.75"h

### C. 107953 Dining Chair, Grey

20.75"w x 24.00"d x 34.50"h

Seat 18.50"d x 18.75"h

### D. 107954 Dining Chair, Blue

20.75"w x 24.00"d x 34.50"h

Seat 18.50"d x 18.75"h

## PRODUCT HIGHLIGHTS



### PRODUCT MATERIALS:

Table: MDF  
Plywood, metal



**CUSHIONED SEATING:** For ultimate comfort and support



**MIX & MATCH:** Combine pieces to match your personal style



B



Green Velvet

**Mix and Match**



C



Grey Velvet



D



Blue Velvet

- Rustic craftsman style bar table updated with a wire brushed antique black finish
- Table constructed with pine, MDF, and birch veneer
- Height adjustable industrial bar stool finished in tobacco with metal frame
- Bar stool constructed with steel and solid bamboo
- Exclusively for Scott Living

DINING COLLECTIONS

ADJUSTABLE  
HEIGHT

**A. 182019 Bar Table**

60.00"l x 30.00"w x 42.00"h

**B. 104968 Bar Stool, Bronze**

16.25"w x 19.25"d x 38.00" - 45.00"h  
Seat 13.75"d x 26.00" - 33.00"h

**UNIT COMPOSITION**

TABLE FINISH: **ANTIQUE BLACK**

CHAIR WOOD FINISH: **TOBACCO**

CHAIR METAL FINISH: **DARK BRONZE**

**HORNELL COLLECTION**

- Round rustic bar set finished in weathered brown with metal details finished in gunmetal
- Constructed with steel, rubberwood, MDF, and oak veneer
- Table and stool are height adjustable from counter to bar height
- Exclusively for Scott Living

**C. 182035 Bar Table**

32.00"dia x 36.00" - 42.00"h

**D. 182036 Bar Stool**

15.00"dia x 25.00" - 30.00"h

**UNIT COMPOSITION**

WOOD FINISH: **WEATHERED OAK**

METAL FINISH: **GUNMETAL**

• Contemporary bar table constructed with polished stainless steel, available in super white or black tempered glass

• Upholstered bar stools with chromed steel base available in black and white leatherette

• Hydraulic bar stool with chromed steel base available in black, grey, and white leatherette

• Exclusively for Scott Living



**A. 182031 Bar Table, White**  
23.75"dia x 42.50"h  
**B. 182032 Bar Table, Black**  
23.75"dia x 42.50"h  
**C. 182004 Bar Stool, Black**  
22.75"w x 20.50"d x 36.00"h  
Seat 14.75"d x 30.75"h

**D. 182005 Bar Stool, White**  
22.75"w x 20.50"d x 36.00"h  
Seat 14.75"d x 30.75"h  
**E. 103075 Adjustable Bar Stool, Black**  
17.75"w x 22.00"d x 35.25" - 41.25"h  
Seat 17.75"d x 24.00" - 30.00"h

**F. 103076 Adjustable Bar Stool, White**  
17.75"w x 22.00"d x 35.25" - 41.25"h  
Seat 17.75"d x 24.00" - 30.00"h  
**G. 103077 Adjustable Bar Stool, Grey**  
17.75"w x 22.00"d x 35.25" - 41.25"h  
Seat 17.75"d x 24.00" - 30.00"h

## UNIT COMPOSITION

METAL FINISH: CHROME

GLASS: SUPER WHITE or BLACK  
TEMPERED GLASS

UPHOLSTERY: BLACK or WHITE  
or GREY LEATHERETTE



- Heavy duty kitchen island for serious cooks
- Removable solid bamboo cutting board top
- Storage compartment under the cutting board

- Comes with metal S hooks to hang gadgets and tools
- Exclusively for Scott Living



A

- A. 102986 Kitchen Island, Mint**  
30.00"l x 20.00"w x 35.00"h
- B. 102987 Kitchen Island, Blue**  
30.00"l x 20.00"w x 35.00"h
- C. 102988 Kitchen Island, Sand**  
30.00"l x 20.00"w x 35.00"h

### UNIT COMPOSITION

WOOD FINISH: MINT, BLUE & SAND

METAL FINISH: CHROME



B



C

## SHOP YOUR LOOK!

The variety in our chair styles and colors allow you to effortlessly define your own look by mixing and matching to create a look that is effortlessly yours!



Add a modern twist of nostalgia to your home decor. Clean lines and earthy colors easily blend with existing items.



The simplicity of metal and leatherette creates an inviting look. What's your style?



Inspired by the past ... designed to intermingle with many of our dining room schemes, our selection is aimed to meet a variety of style types.



## PICK YOUR FAVORITE STYLE!

Mix and match to effortlessly blend with your existing decor!

## DINING CHAIRS



- Grey Linen-Like Upholstery
- Rustic Black Leg Finish

**A. 103066 Side Chair**  
20.00"w x 23.50"d x 39.50"h  
Seat 17.50"d x 19.50"h

A



- Khaki Seat Cover
- Grey Leg Finish

**B. 103803 Side Chair**  
18.50"w x 23.75"d x 38.75"h  
Seat 18.00"d x 19.00"h

B



- Warm Grey Upholstery
- Smokey Black Leg Finish

**C. 102819 Side Chair**  
20.50"w x 26.25"d x 42.00"h  
Seat 19.00"d x 19.50"h

- Beige Upholstery
- Smokey Black Leg Finish

**D. 102820 Side Chair**  
20.50"w x 26.25"d x 42.00"h  
Seat 19.00"d x 19.50"h



C



D



E

- Barley Matte Velvet Upholstery
- Warm Grey Leg Finish

**E. 103129 Parson Chair**  
18.00"w x 25.75"d x 43.75"h  
Seat 18.00"d x 19.50"h



F

- Ash Matte Velvet Upholstery
- Warm Grey Leg Finish

**F. 103128 Parson Chair**  
18.00"w x 25.75"d x 43.75"h  
Seat 18.00"d x 19.50"h



G

- Granite Matte Velvet Upholstery
- Warm Grey Leg Finish

**G. 103130 Parson Chair**  
18.00"w x 25.75"d x 43.75"h  
Seat 18.00"d x 19.50"h

# MIX & MATCH!

## PICK YOUR FAVORITE STYLE!

Mix and match to effortlessly blend with your existing decor!



SCOTT  
LIVING

DINING ROOM

DINING CHAIRS



A



B

- Grey Velvet Upholstery
- Black Nickel Leg Finish

**A. 107953 Side Chair**  
20.75"w x 24.00"d x 34.50"h  
Seat 18.50"d x 18.75"h

- Retro Green Velvet Upholstery
- Black Nickel Leg Finish

**B. 107952 Side Chair**  
20.75"w x 24.00"d x 34.50"h  
Seat 18.50"d x 18.75"h

- Slate Blue Velvet Upholstery
- Black Nickel Leg Finish

**C. 107954 Side Chair**  
20.75"w x 24.00"d x 34.50"h  
Seat 18.50"d x 18.75"h



C



D

- Cognac Upholstery
- Walnut Leg Finish

**D. 103547 Side Chair**  
22.00"w x 22.50"d x 31.50"h  
Seat 17.00"d x 19.25"h

- Charcoal Leatherette Upholstery
- Gunmetal Leg Finish

**E 107852 Side Chair**  
19.00"w x 22.50"d x 35.00"h  
Seat 16.00"d x 18.50"h



E



F



- Crystal Blue Upholstery
- Chrome Leg Finish

**F. 102965 Side Chair**  
23.50"w x 25.00"d x 32.00" - 36.75"h  
Seat 16.50"d x 17.00" - 21.75"h

- Chartreuse Upholstery
- Chrome Leg Finish

**G. 102966 Side Chair**  
23.50"w x 25.00"d x 32.00" - 36.75"h  
Seat 16.50"d x 17.00" - 21.75"h



G



ADJUSTABLE  
HEIGHT



EXPLORE  
HOME  
OFFICE



# TAKE A LOOK AT WHAT'S AHEAD!

## HOME OFFICE

Small Collections .....	97
Desks & Bookcases .....	98
Office Chairs .....	99



- Writing desk finished in wire-brushed burnished cognac and metal frame finished in hand-brushed weathered gunmetal

- Constructed with steel, pine wood, MDF, and pine veneer
- Height-adjustable in 2" increments

- Matching bookcase features two drawers with full extension glides

## CASE PIECE COMPOSITION

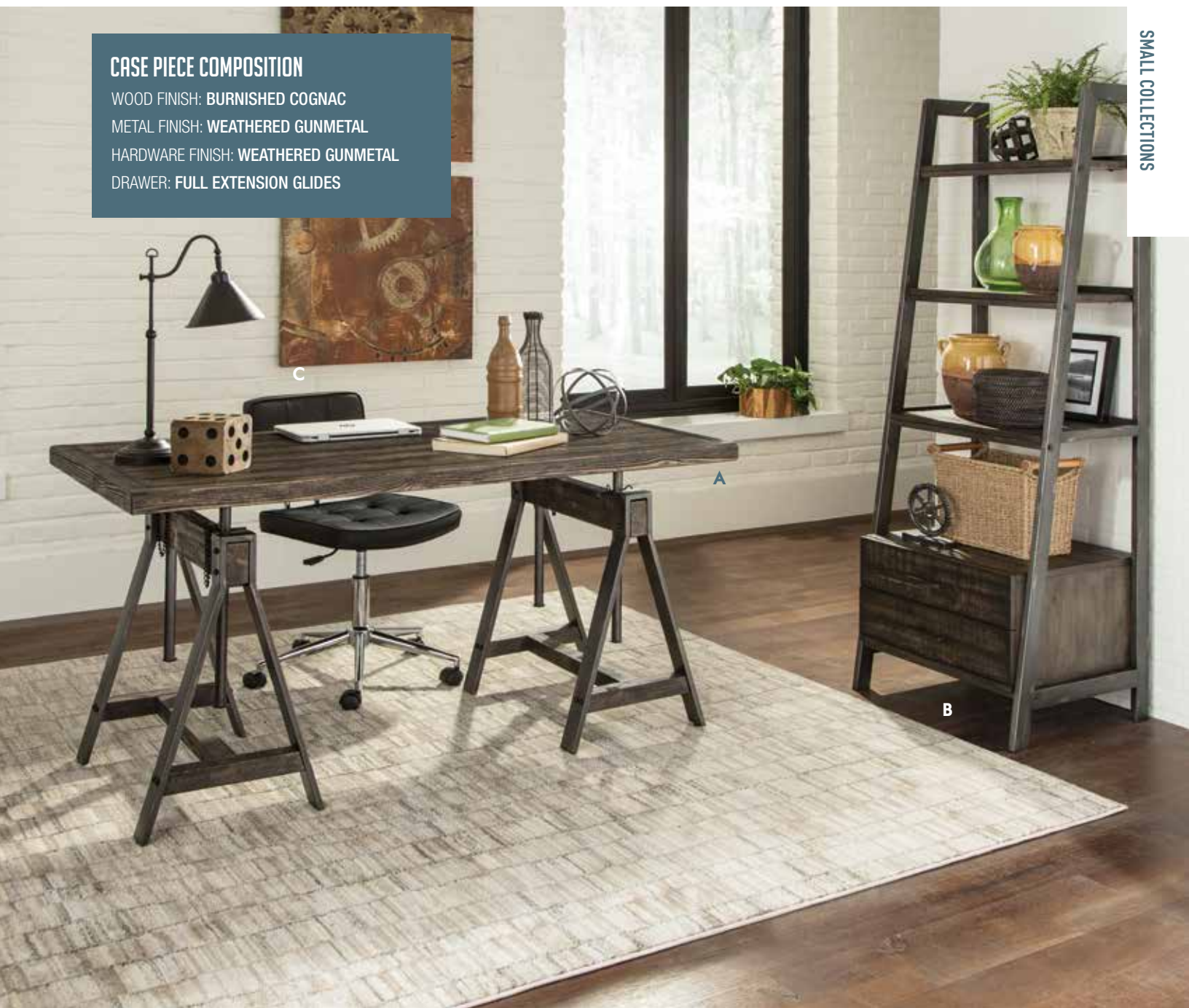
WOOD FINISH: BURNISHED COGNAC

METAL FINISH: WEATHERED GUNMETAL

HARDWARE FINISH: WEATHERED GUNMETAL

DRAWER: FULL EXTENSION GLIDES

SMALL COLLECTIONS



## PRODUCT HIGHLIGHTS



**HAND RUBBED FINISH:** Create a rustic look & feel



**ADJUSTABLE HEIGHT:** Easily adjust for your needs



**STORAGE SPACE:** Store away personal items

### A. 801771 Desk

60.00" w x 39.00" d x 29.50" - 41.75" h  
x 28.00" - 40.25" UDC

### B. 801773 Bookcase

24.00" w x 20.00" d x 72.00" h

### C. 801289 Office Chair

24.25" w x 25.00" d x 31.50" - 36.50" h  
Seat 17.25" d x 18.50" - 23.50" h

- Writing desk finished in smokey black
- Constructed with poplar wood, MDF, and birch veneer
- Felt lined drawer
- Matching file cabinet stores both legal and letter size files

**A. 801751 Writing Desk**

54.00"w x 28.00"d x 30.00"h x 24.00"UDC

**B. 801754 File Cabinet**

16.00"w x 20.50"d x 21.50"h

**CASE PIECE COMPOSITION**

WOOD FINISH: SMOKEY BLACK

METAL FINISH: BROWN

HARDWARE FINISH: GUNMETAL

DRAWER: FULL EXTENSION GLIDES



- Bookcase with four shelves finished in dark grey and frame finished in black
- Constructed with steel, MDF, and ash veneer
- Available in two sizes

**C. 801439 Single Bookcase**

36.25"w x 14.50"d x 74.25"h

**D. 801440 Double Bookcase**

48.00"w x 14.50"d x 74.25"h

**CASE PIECE COMPOSITION**

WOOD FINISH: DARK GREY

METAL FINISH: BLACK



# FLEXIBLE SEATING

Comfortable adjustable office seating!



HOME OFFICE

OFFICE CHAIRS



A



B



C

- Black Leatherette
- Chrome Finish Legs

## A. 801528 Office Chair

25.25"w x 29.00"d x 44.50" - 47.50"h  
Seat 18.50"d x 20.00" - 23.00"h

- Grey Leatherette
- Aluminum Finish Legs

## B. 801538 Office Chair

26.00"w x 23.00"d x 32.50" - 37.50"h  
Seat 17.00"d x 18.50" - 23.50"h

- Brown Leatherette
- Aluminum Finish Legs

## C. 801539 Office Chair

26.00"w x 23.00"d x 32.50" - 37.50"h  
Seat 17.00"d x 18.50" - 23.50"h

- Black Leatherette
- Aluminum Finish Legs

## D. 801327 Office Chair

25.50"w x 26.00"d x 39.00" - 43.00"h  
Seat 20.00"d x 17.00" - 21.00"h

- Taupe Leatherette
- Aluminum Finish Legs

## E. 801328 Office Chair

25.50"w x 26.00"d x 39.00" - 43.00"h  
Seat 20.00"d x 17.00" - 21.00"h

- Black Leatherette
- Chrome Finish Legs

## F. 801289 Office Chair

24.25"w x 25.00"d x 31.50" - 36.50h  
Seat 17.25"d x 18.50" - 23.50"h

- White Leatherette
- Chrome Finish Legs

## G. 802289 Office Chair

24.25"w x 25.00"d x 31.50" - 36.50h  
Seat 17.25"d x 18.50" - 23.50"h



D



E



F



G



# EXPLORE ACCENTS



## TAKE A LOOK AT WHAT'S AHEAD!

### ACCENTS

Benches.....	101
Accent Tables.....	102
Accent Chairs .....	103
Tall Cabinets & Console Tables .....	105
Accent Cabinets.....	107
Rugs.....	111



- Upholstered in a beige and white houndstooth pattern
- Ottoman top lifts to reveal storage
- Leg finished in cappuccino
- Crafted of solid poplar
- Pairs perfectly with sectional 501170



**A. 910140 Ottoman**  
48.25"w x 29.00"d x 20.50"h

COLOR: WHITE/BEIGE  
UPHOLSTERY: FLAT WEAVE  
LEG FINISH: CAPPUCCINO

- Upholstered in black vegan leather
- Hairpin metal legs for an industrial inspired design
- Legs finished in black
- Natural wood finish



**B. 500574 Bench**  
47.50"w x 15.75"d x 16.00"h

COLOR: BLACK  
UPHOLSTERY: VEGAN LEATHER  
LEG FINISH: BLACK

- Leg finish in black
- Upholstered in a multi-tonal burnt orange for a mid century modern flair
- Designed with metal hairpin legs



**C. 501548 Bench**  
47.00"w x 16.00"d x 18.50"h

COLOR: BURNT ORANGE  
UPHOLSTERY: WOVEN  
LEG FINISH: BLACK

- Upholstered in a multi-tonal grey fabric
- Wooden legs finished in a warm brown
- Crafted from birch
- Four matching accent pillows included



**D. 550117 Bench**  
69.00"w x 29.00"d x 26.50"h

COLOR: MULTI-TONAL GREY  
UPHOLSTERY: WOVEN  
LEG FINISH: WARM BROWN

ACCENTS

TABLES

- Finished in rich black
- Sleek metal legs finished in black
- Table top features a quirky tree trunk slab design
- Available in both black and natural oak

- Finished in a smooth natural oak
- Sleek legs finished in black
- Table top features a quirky tree trunk slab design
- Available in both black and natural oak



**A. 903351 Accent Table**  
18.75" diameter x 19.50"h

FINISH: RICH BLACK  
LEG FINISH: METAL



**B. 903352 Accent Table**  
18.75" diameter x 19.50"h

FINISH: NATURAL OAK  
LEG FINISH: METAL

- Finished in a grey high gloss
- Upholstered in orange fabric
- Fun cylinder-shaped accent table
- Easily transforms into an ottoman

- Finished in a grey high gloss
- Upholstered in grey fabric
- Fun cylinder-shaped accent table
- Easily transforms into an ottoman



FINISH: GREY HIGH GLOSS  
UPHOLSTERY: ORANGE

**C. 930015 Accent Table with Ottoman**  
15.75" diameter x 18.00"h



FINISH: GREY HIGH GLOSS  
UPHOLSTERY: GREY

**D. 930017 Accent Table with Ottoman**  
15.75" diameter x 18.00"h



- Upholstered in a light grey fabric
- Matching ottoman included
- Button-tufted details on chair and ottoman

- Leg finish in a rich dark brown
- Mid-century modern design

- Upholstered in a multi-tonal blue fabric
- Leg finish in a rich cappuccino

- Chic wing back design
- Button-tufted back with plush seating
- Crafted of Asian hardwood
- Sinuous spring seating

SCOTT  
LIVING

ACCENTS

CHAIRS



**A. 903820 Accent Chair**  
27.50"w x 29.00"d x 38.50"h  
Seat 19.50"d x 18.00"h  
**Ottoman**  
20.00"w x 14.50"d x 16.50"h

COLOR: GREY  
UPHOLSTERY: LINEN-LIKE FABRIC  
LEG FINISH: BROWN



**B. 903369 Accent Chair**  
25.50"w x 31.00"d x 35.50"h  
Seat 22.00"d x 19.50"h

COLOR: MULTI-TONAL BLUE  
UPHOLSTERY: WOVEN FABRIC  
LEG FINISH: CAPPUCCINO

- Upholstered in a lovely dark teal fabric with matching pillow
- Contemporary design with curved arms and back
- Crafted from solid Asian hardwood with sinuous spring seating
- Leg finish in a rich cappuccino

- Perfect for a rustic style home
- Upholstered in a classic neutral tone plaid
- Sinuous spring seating
- Crafted of solid pine with legs finished in weathered grey

- Upholstered in a light colored grey fabric
- Wood finish in a deep dark brown
- Button-tufted back design
- Crafted of Asian hardwood with sinuous spring



COLOR: BLUE UPHOLSTERY: TEXTURED WOVEN  
LEG FINISH: CAPPUCCINO

**C. 903370 Accent Chair**  
29.00"w x 30.50"d x 40.50"h  
Seat 21.50"d x 19.50"h



COLOR: NEUTRAL BROWNS UPHOLSTERY: FLAT WEAVE  
LEG FINISH: WEATHERED GREY

**D. 904052 Accent Chair**  
30.50"w x 36.00"d x 41.00"h  
Seat 22.50"d x 19.50"h



COLOR: GREY UPHOLSTERY: LINEN-LIKE FABRIC  
LEG FINISH: DARK BROWN

**E. 904068 Accent Chair**  
29.00"w x 32.00"d x 35.50"h  
Seat 23.00"d x 18.00"h

## ACCENTS

## CHAIRS

- Upholstered in black vegan leather and grey fabric with leg finish in black and constructed of Asian hardwood
- Metal caps on legs for a mid-century modern touch
- Available in both black and grey

- Upholstered in a grey fabric
- Legs finished in black
- Crafted of Asian hardwood
- Button tufted back with demi-wings



COLOR: **BLACK** UPHOLSTERY: **VEGAN LEATHER**  
LEG FINISH: **BLACK**

**A. 903377 Accent Chair**

28.50"w x 27.75"d x 33.50"h  
Seat 19.75"d x 20.00"h



COLOR: **GREY** UPHOLSTERY: **WOVEN FABRIC**  
LEG FINISH: **BLACK**

**B. 903378 Accent Chair**

28.50"w x 27.75"d x 33.50"h  
Seat 19.75"d x 20.00"h



COLOR: **GREY** UPHOLSTERY: **WOVEN FABRIC**  
LEG FINISH: **BLACK**

**C. 903379 Accent Chair**

27.00"w x 28.25"d x 36.50"h  
Seat 19.00"d x 17.75"h

- Mid-century modern design
- Features retro tapered legs
- Upholstered in brown fabric with sinuous spring seating
- Available in both brown and grey

- Mid-century modern design
- Features retro tapered legs
- Upholstered in grey fabric with sinuous spring seating
- Available in both brown and grey

- Stylish and modern blue geometric patterned upholstery
- Finished in a stunning chrome
- Sleek arm and metal frame, perfect for a contemporary look
- Matching upholstery set #551221



COLOR: **BROWN** UPHOLSTERY: **WOVEN FABRIC**  
LEG FINISH: **BROWN**

**D. 904045 Accent Chair**

29.00"w x 29.50"d x 30.50"h  
Seat 20.50"d x 18.50"h



COLOR: **GREY** UPHOLSTERY: **WOVEN FABRIC**  
LEG FINISH: **BROWN**

**E. 904046 Accent Chair**

29.00"w x 29.50"d x 30.50"h  
Seat 20.50"d x 18.50"h



COLOR: **GREY/BLUE** UPHOLSTERY: **JACQUARD**  
LEG FINISH: **CHROME**

**F. 903402 Accent Chair**

24.50"w x 28.25"d x 33.00"h  
Seat 21.00"d x 19.00"h

- Wood finish in a rustic brown finish with antique rub-through details
- Hardware finish in nickel
- Shutter-like door design for a rustic yet transitional look

- Features two drawers, two doors, and three shelves for convenient storage space

- Crafted of solid Asian hardwood finish in an espresso finish
- Hardware on cabinet is finished in chrome
- Features two doors, three shelves, and one drawer for ample space storage
- Mid century modern inspired design



FINISH: RUSTIC BROWN

**A. 950732 Tall Cabinet**  
26.00"w x 15.75"d x 74.00"h



FINISH: ESPRESSO

**B. 950927 Tall Cabinet**  
30.00"w x 15.00"d x 72.00"h

- Crafted from rich mango with a natural finish
- Black hardware finish
- Industrial casters for effortless mobility
- Features three drawers and one shelf for ample storage space

**A. 950711 Console Table**  
44.00"w x 18.00"d x 36.00"h



- Crafted from a natural mango
- Black hardware finish
- Industrial casters for effortless mobility
- Features open and closed shelving for ample storage space

**B. 950713 Console Table**  
56.00"w x 18.00"d x 31.00"h



- Crafted of solid birch
- Wood finish in a rich cappuccino with antique glass details

- Cabinet doors push open for easy access
- Features three doors and two shelves for ample storage space

**A. 950733 Accent Cabinet**  
48.00"w x 18.00"d x 36.25"h



FINISH: CAPPUCCINO

- Crafted from mahogany in a weathered grey finish
- Hardware in antique brass
- Features three drawers and two doors

- Crafted from mahogany in a warm brown
- Hardware finished in black
- Features three drawers
- Stylish angled mid-century modern inspired legs



**B. 950759 Accent Cabinet**  
36.00"w x 16.00"d x 32.75"h

FINISH: WEATHERED GREY  
HARDWARE FINISH: ANTIQUE BRASS



**C. 950760 Accent Cabinet**  
36.00"w x 16.00"d x 32.75"h

FINISH: WARM BROWN  
HARDWARE FINISH: BLACK

ACCENTS

CABINETS

- Cabinet finished in a rustic brown with rub-through details
- Drawer fronts decorated with mirror panels for a modern update
- Hardware finished in silver

**A. 950776 Accent Cabinet**  
42.00"w x 15.00"d x 32.00"h

FINISH: **RUSTIC BROWN**  
HARDWARE FINISH: **SILVER**



- Manufactured from mahogany in a light brown finish
- File cabinet inspired hardware finished in antique silver
- Features three stacked drawers for ample storage space
- Rustic vintage inspired design

- Made from mahogany finished in warm brown
- Drawer front accents finished in brass
- Features three drawers for ample storage space
- Sleek mid-century modern inspired design



**B. 950764 Accent Cabinet**  
36.00"w x 16.00"d x 32.75"h

FINISH: **LIGHT BROWN**  
HARDWARE FINISH: **ANTIQUE SILVER**



**C. 950758 Accent Cabinet**  
36.00"w x 16.00"d x 32.75"h

FINISH: **WARM BROWN**  
LEG FINISH: **BRASS**

- Cabinet finished in a champagne color
- Lattice design on mirrored doors for a subtle glam look
- Single shelf behind the cabinet doors
- Hardware finished in silver

- Wood finished in antique grey
- Lattice design on mirrored doors for an inspired glam look
- Hardware finished in bronze
- Three shelves behind the mirrored accented doors



**A. 950771 Accent Cabinet**  
34.00"w x 15.00"d x 34.00"h

FINISH: CHAMPAGNE  
HARDWARE FINISH: SILVER



**B. 950777 Accent Cabinet**  
60.00"w x 15.00"d x 34.25"h

FINISH: ANTIQUE GREY  
HARDWARE FINISH: BRONZE

- Entire cabinet is decorated with mirror panels for a glam look
- Hardware finished is in nickel
- Features two doors and one shelf for ample storage space

- Each drawer is covered in individually placed mirror pieces for an everyday glam look
- Hardware finished in silver
- Features nine drawers to accommodate your everyday items



**C. 950742 Accent Cabinet**  
36.00"w x 16.00"d x 32.00"h

FINISH: CLEAR MIRROR  
HARDWARE FINISH: NICKEL



**D. 950745 Accent Cabinet**  
28.00"w x 15.00"d x 33.50"h

FINISH: CLEAR MIRROR  
HARDWARE FINISH: SILVER



ACCENTS

# AREA RUGS

PICK YOUR FAVORITE STYLE!

No area is complete without a stylish rug that can bring the room together!



# BOLD PATTERNS

Make an impression with one of these colorful and bold pattern rugs!



SCOTT  
LIVING

ACCENTS

RUGS

A



- Color: Grey

**A. 970210 Rug (S)**  
5'0" width x 7'0" length  
**970210L Rug (L)**  
6'6" width x 9'6" length

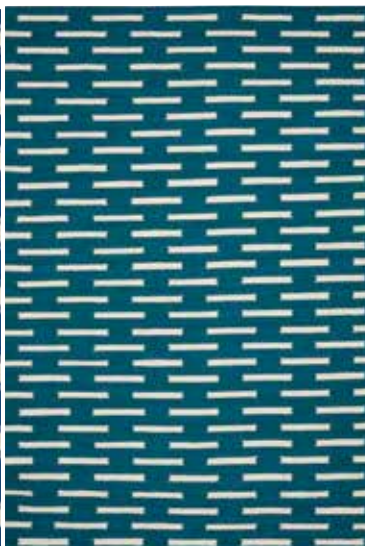
B



- Color: Blue

**B. 970211 Rug (S)**  
5'0" width x 7'0" length  
**970211L Rug (L)**  
6'6" width x 9'6" length

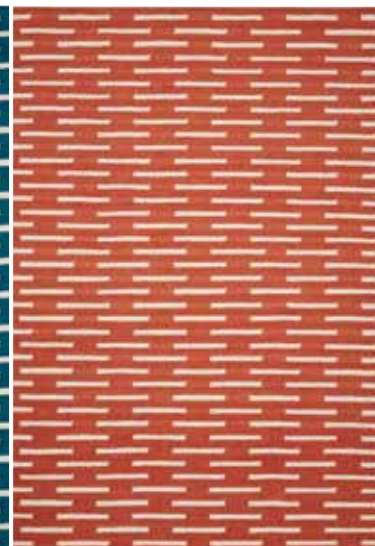
C



- Color: Teal

**C. 970212 Rug (S)**  
5'0" width x 7'0" length  
**970212L Rug (L)**  
6'6" width x 9'6" length

D



- Color: Orange

**D. 970213 Rug (S)**  
5'0" width x 7'0" length  
**970213L Rug (L)**  
6'6" width x 9'6" length

E



- Color: Multi-Tonal Blue/Orange

**E. 970216 Rug (S)**  
5'3" width x 7'3" length  
**970216L Rug (L)**  
7'10" width x 10'0" length

F



- Color: Multi-Tonal Blue/Green

**F. 970217 Rug (S)**  
5'3" width x 7'3" length  
**970217L Rug (L)**  
7'10" width x 10'0" length

G



- Color: Multi-Tonal Neutrals

**G. 970218 Rug (S)**  
5'3" width x 7'3" length  
**970218L Rug (L)**  
6'7" width x 9'6" length

H



- Color: Multi-Tonal Neutral

**H. 970225 Rug (S)**  
5'3" width x 7'0" length  
**970225L Rug (L)**  
7'10" width x 10'0" length



## PICK YOUR FAVORITE STYLE!

No area is complete without a stylish rug that can bring the room together!



### RUGS

A



- Color: Multi-Tonal Light Blue/Grey

**A. 970219 Rug (S)**

5'3" width x 7'5" length

**970219L Rug (L)**

6'7" width x 9'6" length

B



- Color: Multi-Tonal Light Blue/Grey

**B. 970220 Rug (S)**

5'3" width x 7'3" length

**970220L Rug (L)**

6'7" width x 9'6" length

C



- Color: Light Grey

**C. 970221 Rug (S)**

5'3" width x 7'3" length

**970221L Rug (L)**

6'7" width x 9'6" length

D



- Color: Charcoal

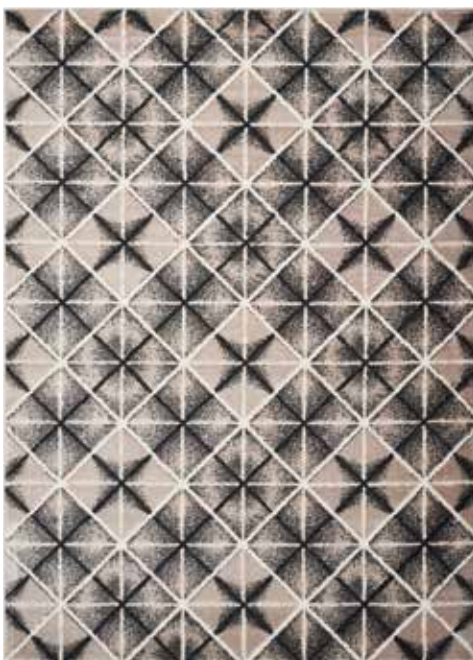
**D. 970222 Rug (S)**

5'3" width x 7'0" length

**970222L Rug (L)**

7'10" width x 10'0" length

E



- Color: Charcoal And Light Grey

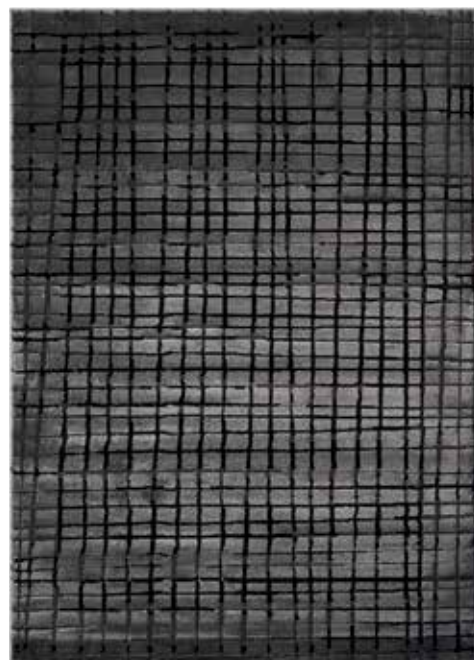
**E. 970223 Rug (S)**

5'3" width x 7'0" length

**970223L Rug (L)**

7'10" width x 10'0" length

F



- Color: Charcoal

**F. 970224 Rug (S)**

5'3" width x 7'0" length

**970224L Rug (L)**

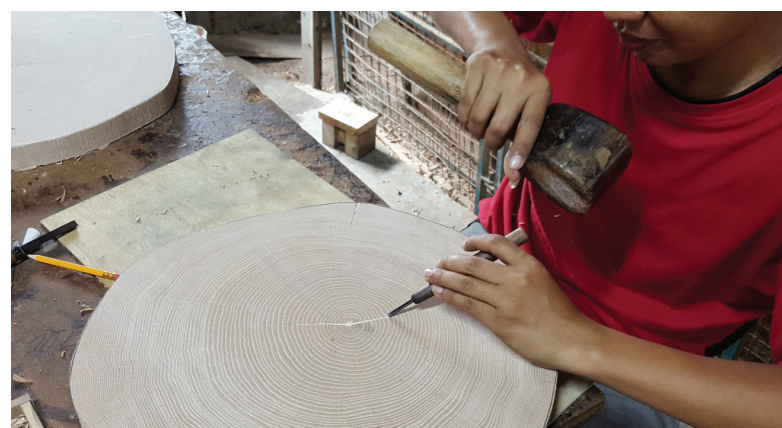
7'10" width x 10'0" length



THROUGHOUT OUR COLLECTION,  
YOU WILL FIND PRODUCTS  
HANDCRAFTED IN INDIA



Skilled Indian artisans have crafted these unique handcrafted furniture pieces. These items are constructed by hand, giving them unique characteristics and quality. The result is a piece of furniture that has distinctively been created to withstand time!





# 2017-2018 SCOTT LIVING FURNITURE CATALOG



12928 SANDOVAL STREET, SANTA FE SPRINGS, CA 90670 TEL. 877.262.7837  
LOS ANGELES • SAN FRANCISCO • ATLANTA • CHICAGO • TEXAS • FLORIDA • NEW JERSEY